

RESTRICTED

The information given in this document is not to be communicated either directly or indirectly to the Press or to any person not authorized to receive it.

W.O.
CODE No.

12090

26
PUBS.
8474

IDENTIFICATION LIST

for

TRAILERS, 1/2 TON, 2 WHEELED,
CARGO, MK. I AND 2
COMPRESSOR, P45
GENERATING SET, 3 1/2 KVA.
WATER, 100 GALLONS, MK. I

1957

(Supersedes Parts List W.O. Code No. 17794)

By Command of the
Army Council

E. W. Playfair

WAR OFFICE
JUNE, 1957

R E S T R I C T E D

P R E F A C E

1. This list has been prepared for the purpose of identifying component parts and assemblies of parts. All concerned will use the designations given in this list when demanding parts from R.A.O.C. or when referring in correspondence to any part of the equipment.
2. Catalogue Nos. quoted in this list will supersede any other Catalogue Nos. that may have been allotted previously.
3. When demanding Spare Parts the following particulars must be quoted:-
 - (a) V.A.O.S. Section.
 - (b) Part Number.
 - (c) Designation of part.
 - (d) Designation of equipment for which part is required.
4. Abbreviations appearing in this list are generally in accordance with those accepted and recognised by the British Standards Institution.
5. Amendments to this list will be notified in A.C.I.s. Units concerned will indent through the R.A.O.C. Stationery Section of the Command for copies as required. It is essential that this list should be carefully amended and details of every amendment entered in the panel below.

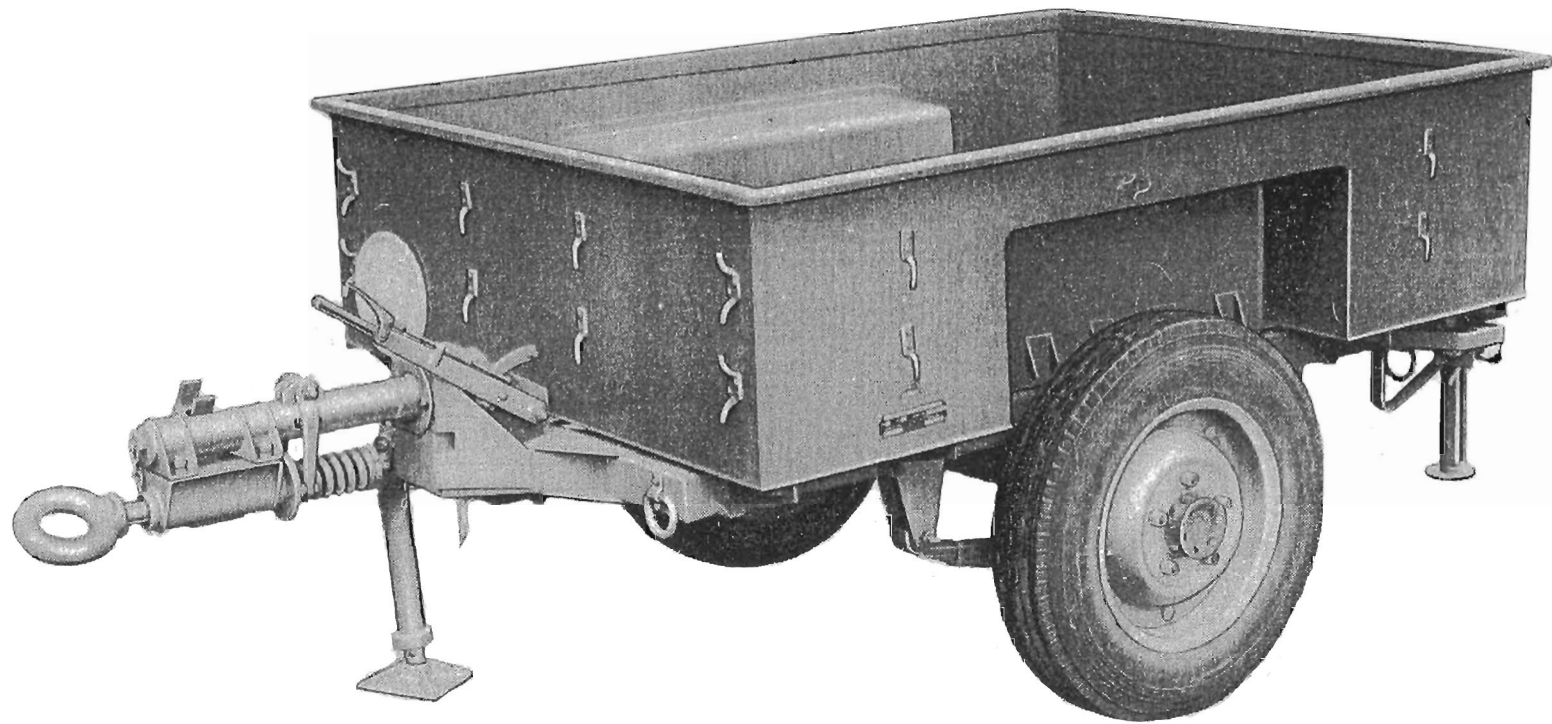
| Amendment Serial No. | A.C.I. | By Whom Amended | Date of Insertion | Amendment Serial No. | A.C.I. | By Whom Amended | Date of Insertion |
|-------------------------|--------|--------------------|----------------------|-------------------------|--------|--------------------|----------------------|
| | | | | | | | |
| | | | | | | | |
| | | | | | | | |
| | | | | | | | |
| | | | | | | | |
| | | | | | | | |

6. Any communication regarding this list should be made to the Director of Ordnance Services, The War Office (Ord.7CA), London, S.W.1, through the normal channels.

I M P O R T A N T

FOR PARTICULARS OF EQUIPMENTS MOUNTED ON THIS CHASSIS, REFERENCE SHOULD BE MADE TO THE FOLLOWING PUBLICATIONS:

| | |
|--|--------------------|
| ILLUSTRATED PARTS LIST - COMPRESSOR, AIR, TRAILER MOUNTED, PESCARA, 100 C.F.M./100 P.S.I., MK.1 | W.O. CODE No.11583 |
| IDENTIFICATION LIST - GENERATING SET, A.C., 3½ KVA., 230V., SINGLE PHASE, 50 CYCLES, No.1, MK.1/1 | W.O. CODE No.10587 |
| PARTS LIST - BODY, WATER TANK, G.S., 100 GALLONS, MK.1 | W.O. CODE No.17812 |



TRAILER, 1/2 TON, 2 WHEELED

TP 4444

CONTENTS

| | Page No. |
|--|-----------|
| PREFACE | ii |
| LIST OF ABBREVIATIONS | iv |
| NUMERICAL INDEX TO PART NUMBERS | v |
| AXLE AND HUBS | 1 |
| Axle | 1 |
| Brakes | 1 |
| Wheels and Tyres | 2 |
| BODY AND FITTINGS | 18 |
| BRAKE CONTROLS AND LINKAGE | 3 |
| Brake Linkage | 3 |
| Handbrake Lever | 3 |
| Handbrake Quadrant | 3 |
| FRAME AND FITTINGS | 5 |
| Mudwings | 6 |
| ELECTRICAL EQUIPMENT | 13 |
| Cables | 13 |
| Cable Fittings | 14 |
| Lamps and Fittings | 15 |
| Trailer Socket | 14 |
| DRAUGHT-EYE AND OVERRUN BRAKE GEAR | 8 |
| Draught-eye | 8 |
| Overrun Brake | 8 |
| Reversing Stop | 9 |
| LEVELLING EQUIPMENT | 11 |
| Support Stands | 11 |
| Screw Jack | 11 |
| SUSPENSION | 10 |

LIST OF ILLUSTRATIONS

| | Plate |
|--|----------|
| AXLE AND HUBS | A |
| BODY AND FITTINGS | E |
| BRAKE, GIRLING, 10 in. x 1$\frac{3}{4}$ in. | B |
| BRAKE LINKAGE | D |
| DRAUGHT-EYE, HANDBRAKE AND JACK | C |
| SUSPENSION | F |
| TAIL AND NUMBER PLATE LAMP | H |
| TRAILER SOCKET | G |

LIST OF ARRANGEMENT DRAWINGS
(Not demandable by Units)

| | |
|--|----------|
| AXLE AND HUBS | FV12088 |
| BODY, MK.1 | FV11772 |
| BODY, MK.2 | FV255266 |
| CHASSIS, MK.1 | FV8134 |
| CHASSIS, MK.2 | FV239858 |
| CHASSIS, MK.1; with mudwings | FV109501 |
| CHASSIS, MK.2; with mudwings | FV239859 |
| CHASSIS, MK.1; with cargo body | FV8135 |
| CHASSIS, MK.2; with cargo body | FV255263 |
| DRAUGHT-EYE | FV183465 |
| DRAUGHT-EYE PIVOT | FV183466 |
| ELECTRICAL EQUIPMENT - MK.1 CHASSIS | FV137009 |
| ELECTRICAL EQUIPMENT - MK.1 CHASSIS; with mudwings | FV137242 |
| ELECTRICAL EQUIPMENT - MK.2 CHASSIS | FV255261 |
| FRAME, MK.1 | FV11629 |
| FRAME, MK.2 | FV255322 |
| HANDBRAKE AND OVERRUN BRAKE | FV183464 |
| LASHING RINGS | FV11562 |
| REAR SKIDS - MK.1 FRAME | FV11563 |
| REAR SKIDS - MK.2 FRAME | FV255251 |
| REVERSING STOP | FV8054 |
| SUSPENSION | FV11657 |

TRAILER, 1/2 TON, 2 WHEELED

LIST OF ABBREVIATIONS

| | | | |
|-----------|-------------------------------------|------------|---|
| A. | Ampere | lbs/sq.in. | Pounds per square inch |
| A.C. | Alternating Current | m. | Milli- |
| A/F. | Across Flats | Max. | Maximum |
| A.F. | Audio-frequency | M. | Mega |
| A.F.V. | Armoured Fighting Vehicle | mm. | Millimetre |
| aux. | Auxiliary | met.c. | Metal Case |
| B.A. | British Association Standard Thread | M.G. | Machine Gun |
| B.C. | Bayonet Cap | Mk. | Mark |
| B.S.F. | British Standard Fine Thread | Mod. | Modification |
| B.S.P. | British Standard Pipe Thread | M.P.P. | Multi-purpose part |
| B.S.W. | British Standard Whitworth Thread | M.S. | Mild Steel |
| C. and A. | Copper and asbestos | u. | Micro |
| Cad. | Cadmium | neg. | Negative |
| C.B. | Contact Breaker | No. | Number |
| C.E. | Commutator End | N.P. | Not Provided |
| ch.hd. | Cheese Head | N.P.T.F. | American National Standard Taper Pipe Thread |
| C.I. | Compression Ignition | O.D. | Overall Diameter |
| cm. | Centimetre | O.G. | Object Glass |
| csk.hd. | Countersunk Head | O.S. | Oversize |
| c/s | Cycles per Second | oz. | Ounce |
| ctrs. | Centres | pap. | Paper |
| C.T.S. | Cab Tyre Sheath | phos. | Phosphor |
| Cyl. | Cylinder | pos. | Positive |
| D.C. | Direct Current | pr. | Pair |
| D.E. | Double Ended | pt. | Pint |
| D.E. | Drive End | P.V.C. | Polyvinyl Chloride |
| deg. | Degree | Pir. | Pounder |
| dia. | Diameter | Rad. | Radius |
| D.P. | Double Pole | R.B.J. | Rotary Base Junction |
| D.T. | Double Turn | rd.hd. | Round Head |
| ext. | External | R.F. | Radio frequency |
| F. | Farad | R.H. | Right Hand |
| F.W.D. | Four Wheel Drive | R.P.M. | Revolutions per Minute |
| F.S.D. | Full Scale Deflection | S.A. | Semi-automatic |
| fil.hd. | Fillister Head | S.C.C. | Single Centre Contact |
| flex. | Flexible | S.C.O.R. | Stabiliser Changeover Relay |
| ft. | Feet | S.E. | Single Ended |
| gal. | Gallon | S.P. | Single Pole |
| G.M. | Gummetal | S.P. & N. | Single Pole and Neutral |
| gm. | Gramme | sq. | Square |
| G/T. | Giant Type | sq.hd. | Square Head |
| H. | Henry | S.T. | Single Turn |
| hd. | Head | Std. | Standard |
| hex.hd. | Hexagon Head | S.W.G. | Standard Wire Gauge |
| H.P. | High Pressure | T.E. | Tangent Elevation |
| h.p. | Horse Power | thd. | Thread |
| H.T. | High Tension | tk. | Tank |
| H.T.S. | High Tensile Steel | T.P. | Triple Pole |
| I.D. | Internal Diameter | t.p.i. | Threads per inch |
| Ident. | Identification | Tub. | Tubular |
| I.F. | Internally Frosted | UNC. | Unified Coarse Thread |
| in. | Inch | UNF. | Unified Fine Thread |
| inst. | Instrument | u/s. | Undersize |
| int. | Internal | V. | Volt |
| k. | Kilo | VA. | Volt - Ampere |
| kVA | Kilovolt - Ampere | Vac. | Vacuum |
| L.F. | Low Frequency | W. | Watt |
| L.H. | Left Hand | W.W. | Wire Wound |
| L.P. | Low Pressure | wkg. | Working |
| L.T. | Low Tension | yd. | Yard |
| lb. | Pound | | |

AXLE AND HUBS

| Item No. | Plate and Ref.No. | Drawing No. | V.A.O.S. Section | Part No. | Designation | No. Off | Remarks |
|----------|-------------------|-------------|------------------|------------------|--|---------|------------------------------|
| 1 | A | | | | | | |
| 2 | 1-3 | | LV9/BTR | FV12051 | AXLE | 1 | |
| 3 | 1 | FV12045 | | NP | Axle | 1 | |
| 4 | 2 | FV12046 | | NP | Flange, backplate | 2 | |
| 5 | 3 | FV12044 | | NP | BRACKET, LOCATING, ROAD SPRING | 2 | |
| 6 | - | FV12041 | | NP | Plate, upper | 4 | |
| 7 | - | FV12042 | | NP | Plate, lower | 2 | |
| 8 | - | FV12043 | | NP | Web | 8 | |
| 9 | - | FV108607 | | NP | Boss, brake compensator pivot | 1 | |
| 10 | 4-5 | | LV9/ELC | FV14365 | HUB | 2 | |
| 11 | 4 | FV14354 | | NP | Hub | 2 | |
| 12 | 5 | | LV9/ELC | FV14355 | Stud, wheel, R.H. thd. | 10 | |
| 13 | 6-7 | | LV6/MT7 | TN/359S/354 X | BEARING, TAPERED ROLLER, 1.8125 IN. x 3.3464 IN. x .813 IN. | 4 | |
| 14 | 6 | | LV6/MT7 | TN/354A | Cup, roller bearing, 85 mm. O.D. | 4 | |
| 15 | 7 | | LV6/MT7 | TN/359S | Cone, roller bearing, 1.8125 in. I.D. | 4 | |
| 16 | 8 | | LV9/ELC | FV14350 | Ring, support, stub axle oil seal | 2 | |
| 17 | 9 | | LV6/MT1 | GO/B22090 | Seal, oil, ext., 2.375 in. I.D. x 3.436 in. O.D. x .375 in. | 2 | |
| 18 | 10 | | LV9/ELC | FV15301 | Joint, oil catcher | 2 | |
| 19 | 11 | | LV9/ELC | FV15302 | Ring, leather, oil catcher | 2 | |
| 20 | 12 | | LV9/ELC | FV15300 | Catcher, oil | 2 | |
| 21 | 13 | | G1 | 5305-99-941-0314 | Bolt, precision, UNF-2A, R steel, hex. hd., zinc coated, 3/8 in. x 1.3/4 in. | 12 | } Oil catcher to axle flange |
| 22 | 14 | | G1 | 5310-99-941-0912 | Nut, precision, UNF-2B, A steel, hex., zinc coated, 3/8 in. | 12 | |
| 23 | 15 | | G1 | 5310-99-941-6656 | Washer, spring, steel, S.T., sq. section, 3/8 in. | 12 | |
| 24 | 16 | | LV9/BTR | FV12062 | Plate, baffle, oil seal | 2 | |
| 25 | 17 | | LV9/ELC | FV14356 | Washer, hub bearing | 2 | |
| 26 | 18 | | LV9/ELC | FV131185 | Nut, circular, wheel hub | 4 | Hub to axle |
| 27 | 19 | | LV9/BTR | FV12069 | CAP, HUB, ROAD WHEEL | 2 | |
| 28 | - | FV12067 | | NP | Cap | 2 | |
| 29 | - | FV12068 | | NP | Flange | 2 | |
| 30 | 20 | | LV9/BTR | FV12066 | Washer, hub cap joint | 2 | |
| 31 | 21 | | G1 | 5305-99-941-0295 | Bolt, precision, UNF-2A, R steel, hex. hd., zinc coated, 5/16 in. x 1 in. | 12 | } Hub caps to hubs |
| 32 | 22 | | G1 | 5310-99-941-6655 | Washer, spring, steel, S.T., sq. section, 5/16 in. | 12 | |
| 33 | 23 | | LV9/ELC | FV14361 | Drum, brake | 2 | |
| 34 | 24 | | LV9/ELC | FV15524 | Nut, wheel, R.H. thd. | 10 | |
| 35 | 25 | | LV6/MT1 | TT/NB5960 | Nipple, lubricating, type 11A, B.S.P., 1/8 in. | 2 | |
| 36 | 26 | | G1 | 5305-99-941-6534 | Screw, machine, UNF-2A, T steel, csk. hd., slotted, zinc coated, 1/4 in. x 5/8 in. | 6 | Drum to hub |
| 37 | B | | | | | | |
| 38 | - | GB42073 | | NP | BRAKE, GIRLING, 10 IN. x 1.3/4 IN.; LEFT | 1 | |
| 39 | - | GB42079 | | NP | Backplate | 1 | |
| 40 | - | GB42074 | | NP | BRAKE, GIRLING, 10 IN. x 1.3/4 IN.; RIGHT | 1 | |
| 41 | 1 | GB42080 | | NP | Backplate | 1 | |
| 42 | | | | | BRAKES - | | |
| 43 | 2-4 | | LV7/GB | GB/B41582BT | SHOE, BRAKE, 10 IN. x 1.3/4 IN.; FIRST | 2 | |
| 44 | 2 | GB41583 | | NP | Shoe | 2 | |
| 45 | 3 | | LV7/GB | GB/41584BT | Lining, 10 in. x 1.3/4 in. brake shoe | 20 | |
| 46 | 4 | | LV7/GB | 71-BS-3C | Rivet, brake shoe lining | 2 | |
| 47 | - | | LV7/GB | GB/B41585BT | SHOE, BRAKE, 10 IN. x 1.3/4 IN.; REAR | 2 | |
| 48 | - | GB41586 | | NP | Shoe | 2 | |
| 49 | - | | LV7/GB | GB/41584BT | Lining, 10 in. x 1.3/4 in. brake shoe | 2 | |
| 50 | - | | LV7/GB | 71-BS-3C | Rivet, brake shoe lining | 20 | |
| 51 | 5 | | LV7/GB | GB43585 | Spring, return, brake shoe | 2 | |
| 52 | 6 | | LV7/GB | GB39757 | Spring, return, brake shoe | 2 | |

| Item | Plate and Ref.No. | Drawing No. | V.A.O.S. Section | Part No. | Designation | No. Off | Remarks |
|------|-------------------|-------------|------------------|------------------|---|---------|------------------|
| 1 | B | | | | BRAKES - Contd. | | |
| 2 | 7 | | LV7/GB | GB40038 | Stop, brake shoe | 4 | Brake shoe stop |
| 3 | - | | G1 | 5310-99-941-0914 | Nut, precision, UNF-2B, A steel, hex., zinc coated, 5/16 in. | 4 | |
| 4 | - | | LV7/GB | GB14818 | Washer, felt, brake shoe stop | 4 | Brake shoe stop |
| 5 | 8-11 | | LV7/GB | GB42702C | ADJUSTER, BRAKE | 2 | |
| 6 | 8 | GB41321 | | NP | Housing | 2 | |
| 7 | 9 | | LV7/GB | GB42704C | Cone, brake adjuster | 2 | |
| 8 | 10 | | LV7/GB | GB41322C | Plunger, brake adjuster, left | 2 | |
| 9 | 41 | | LV7/GB | GB41323C | Plunger, brake adjuster, right | 2 | |
| 10 | 12 | | G1 | 5305-99-941-0438 | Screw, precision, UNF-2A, R steel, hex. hd., 3/8 in. x 3/4 in. | 4 | } Brake adjuster |
| 11 | 13 | | G1 | 5310-99-941-6656 | Washer, spring, steel, S.T., sq. section, 3/8 in. | 4 | |
| 12 | 14-24 | | LV7/GB | GB42705 | EXPANDER, BRAKE | 2 | |
| 13 | 14 | | LV7/GB | GB42706 | HOUSING, BRAKE EXPANDER | 2 | |
| 14 | 15 | GB2683 | | NP | Stud | 4 | |
| 15 | 16 | | LV7/GB | GB1404C | Cone, brake expander | 2 | |
| 16 | 17 | | LV7/GB | GB535 | Roller, brake expander | 4 | |
| 17 | 18 | | LV7/GB | GB42077 | Plunger | 4 | |
| 18 | 19 | | LV7/GB | GB67 | Pin:- Brake draw link to expander cone | 2 | |
| | 20 | | G1 | 5315-99-942-0385 | Pin, cotter, split, M.S., phosphated, 3/32 in. x 1.1/2 in. | 4 | |
| 20 | 21 | | LV7/GB | GB2841 | Washer, zinc, brake expander dust cover | 4 | |
| 21 | 22 | | LV7/GB | GB2501 | Cover, dust, brake expander | 2 | |
| 22 | 23 | | G1 | 5310-99-941-6627 | Washer, spring, steel, D.T., 1/4 in. | 4 | |
| 23 | 24 | | G1 | GA90749 | Nut, Simmonds, steel, type T, thin, B.S.F., 1/4 in. | 4 | |
| 24 | 25 | | LV7/GB | GB42878 | Link, draw, brake expander | 2 | |
| 25 | - | | | | WHEELS AND TYRES - | | |
| 26 | - | | LV6/MT14 | 91283 | DISC, WHEEL, DIVIDED TYPE, 4.50E x 16 IN. | 2 | |
| 27 | - | | LV6/MT14 | 2530-99-910-7648 | Bolt, wheel clamping, M.T., UNF-2A, semi-pan hd., sq. shoulder, 1/2 in. | 16 | |
| 28 | - | | LV6/MT14 | 2530-99-910-7652 | Nut, wheel stud and clamping bolt, 1/2 in. R.H. | 16 | |
| 29 | - | | LV6/MT14 | 7435 | Tyre, pneumatic, L.P., 6.00 in. x 16 in. | 2 | |
| 30 | - | | LV6/MT14 | 9426 | Tube, inner, pneumatic, L.P., 6.00 in. x 16 in. | 2 | |

BRAKE CONTROLS AND LINKAGE

| Item No. | Plate and Ref.No. | Drawing No. | V.A.O.S. Section | Part No. | Designation | No. Off | Remarks |
|----------|-------------------|-------------|------------------|------------------|--|---------|--------------------------------------|
| 1 | C | | | | | | |
| 2 | 1-11 | FV239851 | | NP | LEVER, HANDBRAKE | 1 | |
| 3 | 1 | | LV9/BTR | FV239852 | LEVER, HANDBRAKE | 1 | |
| 4 | - | FV11551 | | NP | Lever | 1 | |
| 5 | - | FV239853 | | NP | Boss, pivot | 1 | |
| 6 | - | FV7938 | | NP | Boss, pawl | 1 | |
| 7 | - | FV7939 | | NP | Guide, trigger rod | 1 | |
| 8 | - | FV7936 | | NP | Handle | 1 | |
| 9 | 2 | | LV9/BTR | FV7953 | Pawl, handbrake | 1 | |
| 10 | 3 | | LV9/BTR | FV7954 | Pin, handbrake pawl | 1 | |
| 11 | - | | G1 | 5310-99-941-0914 | Nut, precision, UNF-2B, A steel, hex., zinc coated, 5/16 in. | 1 | Pawl pin |
| 12 | 4 | | LV9/BTR | FV7950 | ROD, TRIGGER, HANDBRAKE | 1 | |
| 13 | - | FV7949 | | NP | Rod | 1 | |
| 14 | - | | G1 | XB14272 | Washer, plain, steel, zinc coated, 1/4 in. | 1 | |
| 15 | 5 | | LV9/BTR | FV7952 | Spring, handbrake trigger rod | 1 | |
| 16 | - | | G1 | XB14272 | Washer, plain, steel, zinc coated, 1/4 in. | 1 | |
| 17 | 6 | | LV9/BTR | FV7951 | Eye, handbrake trigger rod | 1 | |
| 18 | 7 | | G1 | 5310-99-941-0891 | Nut, precision, UNF-2B, A steel, hex., lock, zinc coated, 1/4 in. | 1 | Trigger rod eye |
| 19 | 8 | | LV9/BTR | FV7947 | Lever, handbrake trigger | 1 | |
| 20 | 9 | | LV9/BTR | FV7948 | Pin, pivot, handbrake trigger | 2 | |
| 21 | 10 | | G1 | XB14272 | Washer, plain, steel, zinc coated, 1/4 in. | 5 | } Trigger rod and lever to handbrake |
| 22 | 11 | | G1 | 5315-99-942-0378 | Pin, cotter, split, M.S., phosphated, 1/16 in. x 3/4 in. | 5 | |
| 23 | 12-13 | | LV9/BTR | FV7963 | QUADRANT, HANDBRAKE | 1 | |
| 24 | 12 | FV7961 | | NP | Plate | 3 | |
| 25 | 13 | FV7962 | | NP | Pin, stop | 2 | |
| 26 | - | | G1 | 5305-99-941-0539 | Screw, precision, UNF-2A, R steel, hex. hd., zinc coated, 3/8 in. x 3/4 in. | 2 | } Handbrake quadrant to frame |
| 27 | - | | G1 | 5310-99-941-6656 | Washer, spring, steel, S.T., sq. section, 3/8 in. | 2 | |
| 28 | D | | | | BRAKE LINKAGE - | | |
| 29 | 1-2 | | LV9/BTR | FV108614 | LEVER, COMPENSATOR; with bush | 1 | |
| 30 | 1 | | LV6/MT1 | 20267 | Bearing, bronze, oil retaining, .6265 in. I.D. x .7515 in. O.D. x 3/4 in. | 2 | |
| 31 | 2 | FV108613 | | NP | LEVER | 1 | |
| 32 | - | FV108609 | | NP | Lever, upper | 1 | |
| 33 | - | FV108610 | | NP | Lever, lower | 1 | |
| 34 | - | FV108611 | | NP | Distance-piece | 1 | |
| 35 | - | FV108608 | | NP | Tube, pivot | 1 | |
| 36 | 3 | | LV9/BTR | FV108615 | Arm, compensator | 2 | |
| 37 | 4 | | G1 | 5305-99-941-0318 | Bolt, precision, UNF-2A, R steel, hex. hd., zinc coated, 3/8 in. x 2.3/4 in. | 1 | } Compensator lever to arm |
| 38 | 5 | | G1 | 5310-99-941-0915 | Nut, precision, UNF-2B, A steel, hex., zinc coated, 3/8 in. | 1 | |
| 39 | 6 | | G1 | 5310-99-941-6656 | Washer, spring, steel, S.T., sq. section, 3/8 in. | 1 | |
| 40 | 7 | | LV9/BTR | FV108616 | Bolt, pivot, compensator | 1 | |
| 41 | 8 | | G1 | 5310-99-941-0869 | Nut, precision, UNF-2B, A steel, hex., slotted, zinc coated, 1/4 in. | 1 | } Compensator arm to axle |
| 42 | 9 | | G1 | XB14272 | Washer, plain, steel, zinc coated, 1/4 in. | 1 | |
| 43 | - | | G1 | 5315-99-942-0379 | Pin, cotter, split, M.S., phosphated, 1/16 in. x 1 in. | 1 | |
| 44 | - | FV12085 | | NP | ROD, OPERATING, BRAKE, RIGHT | 1 | |
| 45 | 10 | | LV9/BTR | FV12083 | Rod, brake, right | 1 | |
| 46 | 11 | | LV9/BTR | FV7864 | Fork-end (M.P.P.) | 1 | |

BRAKE CONTROLS AND LINKAGE

| Item No. | Plate and Ref.No. | Drawing No. | V.A.O.S. Section | Part No. | Designation | No. Off | Remarks |
|----------|-------------------|-------------|------------------|------------------|---|---------|--|
| 1 | D | | | | BRAKE LINKAGE - Contd. | | |
| 2 | - | | | | ROD, OPERATING, BRAKE, RIGHT - Contd. | | |
| 3 | 12 | | G1 | 5310-99-941-0892 | Nut, precision, UNF-2B, A steel, hex., lock, zinc coated, 5/16 in. | 1 | Fork-end |
| 4 | - | FV12087 | LV9/BTR | FV12109 | Adaptor, brake rod. | 1 | |
| 5 | - | | | NP | | | |
| 6 | 13 | | LV9/BTR | FV12086 | ROD, OPERATING, BRAKE, LEFT | 1 | |
| 7 | 14 | | LV9/BTR | FV7864 | Rod, brake, left | 1 | |
| 8 | 15 | | G1 | 5310-99-941-0892 | Fork-end (M.P.P.) | 1 | |
| | - | | | | Nut, precision, UNF-2B, A steel, hex., lock, zinc coated, 5/16 in. | | Fork-end |
| 9 | - | | LV9/BTR | FV12109 | Adaptor, brake rod | 1 | |
| 10 | - | | G1 | 5310-99-941-0914 | Nut, precision, UNF-2B, A steel, hex., zinc coated, 5/16 in. | 2 | } Brake expander units |
| 11 | - | | G1 | 5310-99-941-0892 | Nut, precision, UNF-2B, A steel, hex., lock, zinc coated, 5/16 in. | 2 | |
| 12 | 16 | | LV9/BTR | FV7867 | Pin, fork-end (M.P.P.) | 2 | } |
| 13 | 17 | | G1 | XB11624 | Washer, plain, steel, zinc coated, 5/16 in. | 4 | |
| 14 | - | | G1 | 5310-99-941-6655 | Washer, spring, steel, S.T., sq. section, 5/16 in. | 2 | } Fork-end pins |
| 15 | 18 | | G1 | 5315-99-942-0378 | Pin, cotter, split, M.S., phosphated, 1/16 in. x 3/4 in. | 4 | |
| 16 | 19 | | LV9/BTR | FV108619 | STIRRUP, COMPENSATOR | 1 | } Compensator stirrup to compensator lever |
| 17 | - | FV108617 | | NP | Stirrup | 1 | |
| 18 | - | FV108618 | | NP | Lug | 1 | |
| 19 | 20 | | LV9/BTR | FV108620 | Tube, distance, compensator stirrup | 1 | |
| 20 | 21 | | G1 | 5305-99-941-0304 | Bolt, precision, UNF-2A, R steel, hex. hd., zinc coated, 5/16 in. x 2.3/4 in. | 1 | |
| 21 | 22 | | G1 | 5310-99-941-0914 | Nut, precision, UNF-2B, A steel, hex., zinc coated, 5/16 in. | 1 | |
| 22 | 23 | | G1 | 5310-99-941-6655 | Washer, spring, steel, S.T., sq. section, 5/16 in. | 1 | |

FRAME AND FITTINGS

| Item No. | Plate and Ref.No. | Drawing No. | V.A.O.S. Section | Part No. | Designation | No. Off | Remarks |
|----------|-------------------|-------------|------------------|------------------|--|---------|---------------------------|
| 1 | E | FV11629 | | NP | FRAME, MK. 1 | 1 | |
| 2 | - | FV11605 | | NP | Crossmember, front | 1 | |
| 3 | - | FV11610 | | NP | Stiffener, rear crossmember | 1 | |
| 4 | - | FV11613 | | NP | Stiffener, rear skid | 1 | |
| 5 | - | FV11601 | | NP | BRACKET, DRAUGHT-EYE PIVOT; with bush | 1 | |
| 6 | - | | LV6/MT1 | 18128 | Bearing, bronze, oil retaining, 1.0030 in. I.D. x 1.2530 in. O.D. x 1 in. | 2 | |
| 7 | - | FV130670 | | NP | Plate, inscription | 1 | |
| 8 | - | FV7777 | | NP | Plate, inscription | 1 | |
| 9 | - | | G1 | GA10958 | Rivet, steel, boss hd., 1/8 in. x 3/8 in. | 4 | |
| 10 | - | FV227107 | | NP | Bracket, convoy plate | 1 | |
| 11 | - | FV255321 | | NP | FRAME, MK. 2 | 1 | |
| 12 | - | FV255327 | | NP | Crossmember, front | 1 | |
| 13 | - | FV11610 | | NP | Stiffener, rear crossmember | 1 | |
| 14 | - | FV255331 | | NP | Stiffener, rear skid | 2 | |
| 15 | - | FV11601 | | NP | BRACKET, DRAUGHT-EYE PIVOT; with bush | 1 | |
| 16 | - | | LV6/MT1 | 18128 | Bearing, bronze, oil retaining, 1.0030 in. I.D. x 1.2530 in. O.D. x 1 in. | 2 | |
| 17 | - | FV130670 | | NP | Plate, inscription | 1 | |
| 18 | - | | G1 | GA10958 | Rivet, steel, boss hd., 1/8 in. x 3/8 in. | 4 | |
| 19 | - | FV227107 | | NP | Bracket, convoy plate | 1 | |
| 20 | - | | | | FRAME FITTINGS - | | |
| 21 | - | FV11561 | | NP | Skid, rear | 2 | Mk. 1 Frame |
| 22 | - | FV255252 | | NP | SKID, REAR | 2 | Mk. 2 Frame |
| 23 | - | FV255253 | | NP | PLATE, TOP | 2 | |
| 24 | - | FV255254 | | NP | Plate | 2 | |
| 25 | - | | G1 | 5310-99-941-0915 | Nut, precision, UNF-2B, A steel, hex., zinc coated, 3/8 in. | 6 | Welded to top plate |
| 26 | - | FV255255 | | NP | Skid | 2 | |
| 27 | - | | G1 | 5305-99-941-0540 | Screw, precision, UNF-2A, R steel, hex. hd., zinc coated, 3/8 in. x 7/8 in. | 6 | Rear skids to Mk. 1 frame |
| 28 | - | | G1 | 5310-99-941-0915 | Nut, precision, UNF-2B, A steel, hex., zinc coated, 3/8 in. | 6 | |
| 29 | - | | G1 | 5310-99-941-6656 | Washer, spring, steel, S.T., sq. section, 3/8 in. | 6 | |
| 30 | - | | G1 | 5305-99-941-0310 | Bolt, precision, UNF-2A, R steel, hex. hd., zinc coated, 3/8 in. x 1.1/8 in. | 6 | Rear skids to Mk. 2 frame |
| 31 | - | | G1 | 5310-99-941-6656 | Washer, spring, steel, S.T., sq. section, 3/8 in. | 6 | |
| 32 | - | FV11505 | | NP | PINTLE, REAR | 1 | |
| 33 | 1 | | LV9/BTR | FV11504 | Bracket, pintle | 1 | |
| 34 | 2-4 | | LV9/BTR | FV11503 | PINTLE | 1 | |
| 35 | 2 | FV11500 | | NP | Pin | 1 | |
| 36 | 3 | FV11501 | | NP | Collar | 1 | |
| 37 | 4 | FV11502 | | NP | Handle | 1 | |
| 38 | 5 | | LV9/BTR | FV7617 | CHAIN, RETAINING, PINTLE | 1 | |
| 39 | - | | G1 | GA13572 | Chain, steel, No. 4, single link, 14 S.W.G. | as req. | |
| 40 | - | FV7614 | | NP | Bracket, chain | 1 | |
| 41 | - | FV239863 | | NP | Clip, spring | 1 | |
| 42 | - | | G1 | 5305-99-941-0541 | Screw, precision, UNF-2A, R steel, hex. hd., zinc coated, 3/8 in. x 1 in. | 1 | Rear pintle to frame |
| 43 | 6 | | G1 | 5305-99-941-0310 | Bolt, precision, UNF-2A, R steel, hex. hd., zinc coated, 3/8 in. x 1.1/8 in. | 2 | |
| 44 | - | | G1 | 5310-99-941-0915 | Nut, precision, UNF-2B, A steel, hex., zinc coated, 3/8 in. | 3 | |

TRAILER, 1/2 TON, 2 WHEELED

FRAME AND FITTINGS

| Item No. | Plate and Ref.No. | Drawing No. | V.A.O.S. Section | Part No. | Designation | No. Off | Remarks |
|----------|-------------------|-------------|------------------|------------------|---|---------|------------------------------------|
| 1 | C | | | | FRAME FITTINGS - Contd. | | |
| 2 | - | | G1 | 5310-99-941-6656 | Washer, spring, steel, S.T., sq. section, 3/8 in. | 3 | } Rear pintle to frame |
| 3 | 38 | DV11562 | | NP | RING, LASHING | 4 | |
| 4 | - | | LV9/BTR | FV7611 | Ring, lashing | 4 | |
| 5 | - | FV11559 | | NP | Plate, retaining | 4 | |
| 6 | - | FV11560 | | NP | Plate, stiffening | 4 | |
| 7 | - | | G1 | 5305-99-941-0540 | Screw, precision, UNF-2A, R steel, hex. hd., zinc coated, 3/8 in. x 7/8 in. | 8 | |
| 8 | - | | G1 | 5310-99-941-0915 | Nut, precision, UNF-2B, A steel, hex., zinc coated, 3/8 in. | 8 | |
| 9 | - | | G1 | 5310-99-941-6656 | Washer, spring, steel, S.T., sq. section, 3/8 in. | 8 | |
| 10 | - | FV255256 | | NP | PLATE, RETAINING, LASHING RING | 2 | } Mk. 2 Frame |
| 11 | - | FV11559 | | NP | Plate | 2 | |
| 12 | - | | G1 | 5310-99-941-0915 | Nut, precision, UNF-2B, A steel, hex., zinc coated, 3/8 in. | 4 | |
| 13 | - | | LV9/BTR | FV7611 | Ring, lashing | 2 | |
| 14 | - | | G1 | 5305-99-941-1778 | Screw, machine, UNF-2A, M.S., csk. hd., slotted, zinc coated, 3/8 in. x 3/4 in. | 4 | |
| 15 | - | FV109248 | | NP | MUDWING, RIGHT; with brackets | 1 | |
| 16 | - | | LV9/BTR | FV109247 | MUDWING, RIGHT | 1 | |
| 17 | - | FV109245 | | NP | Mudwing | 1 | |
| 18 | - | FV109246 | | NP | Valance | 1 | |
| 19 | - | FV8020 | | NP | Plate, inscription, tyre pressure | 1 | |
| 20 | - | FV8050 | | NP | Plate, registration number | 1 | |
| 21 | - | FV109259 | | NP | Bracket, lamp | 1 | |
| 22 | - | | G1 | GA10956 | Rivet, steel, boss hd., 1/8 in. x 1/4 in. | 9 | } Plates and bracket to wing |
| 23 | - | | LV6/MT1 | 9905-99-942-6894 | Sign, bridge, 9 in. dia. | 1 | |
| 24 | - | FV7774 | | NP | Distance-piece, bridge sign | 3 | |
| 25 | - | | G1 | GA10959 | Rivet, steel, boss hd., 1/8 in. x 1/2 in. | 3 | |
| 26 | - | FV109244 | | NP | BRACKET, MUDWING | 2 | |
| 27 | - | FV109241 | | NP | Bracket, vertical | 2 | |
| 28 | - | FV109242 | | NP | Bracket, horizontal | 2 | |
| 29 | - | FV109243 | | NP | Gusset | 4 | |
| 30 | - | FV183279 | | NP | Plate, packing | 2 | |
| 31 | - | | G1 | GA10957 | Rivet, steel, boss hd., 1/8 in. x 5/16 in. | 20 | |
| 32 | - | | G1 | GA11165 | Rivet, steel, csk. hd., 1/8 in. x 3/8 in. | 2 | |
| 33 | - | FV109251 | | NP | MUDWING, LEFT; with brackets | 1 | |
| 34 | - | | LV9/BTR | FV109250 | MUDWING, LEFT | 1 | |
| 35 | - | FV109249 | | NP | Mudwing | 1 | |
| 36 | - | FV109246 | | NP | Valance | 1 | |
| 37 | - | FV8020 | | NP | Plate, inscription, tyre pressure | 1 | |
| 38 | - | FV7779 | | NP | Plate, inscription, centre of gravity | 1 | |
| 39 | - | | G1 | GA10956 | Rivet, steel, boss hd., 1/8 in. x 1/4 in. | 4 | } Plates |
| 40 | - | FV109244 | | NP | BRACKET, MUDWING | 1 | |
| 41 | - | FV109241 | | NP | Bracket, vertical | 1 | |
| 42 | - | FV109242 | | NP | Bracket, horizontal | 1 | |
| 43 | - | FV109243 | | NP | Gusset | 1 | |
| 44 | - | FV183279 | | NP | Plate, packing | 1 | |
| 45 | - | | G1 | GA10957 | Rivet, steel, boss hd., 1/8 in. x 5/16 in. | 20 | |
| 46 | - | | G1 | GA11165 | Rivet, steel, csk. hd., 1/8 in. x 3/8 in. | 2 | |

FRAME AND FITTINGS

| Item No. | Plate and Ref.No. | Drawing No. | V. A. O. S. Section | Part No. | Designation | No. Off | Remarks |
|----------|-------------------|-------------|---------------------|------------------|---|---------|----------------------------|
| 1 | E | | | | FRAME FITTINGS - Contd. | | |
| 2 | - | | G1 | 5305-99-941-0525 | Screw, precision, UNF-2A, R steel, hex. hd., zinc coated, 5/16 in. x 3/4 in. | 8 |) Mudwings to frame |
| 3 | - | | G1 | 5310-99-941-0914 | Nut, precision, UNF-2B, A steel, hex. zinc coated, 5/16 in. | 8 | |
| 4 | - | | G1 | 5310-99-941-6655 | Washer, spring, steel, S.T., sq. section, 5/16 in. | 8 | |
| 5 | 7 | FV255338 | | NP | MOUNTING, TAIL LAMP, RIGHT | 1 | |
| 6 | - | FV255339 | | NP | Guard | 1 | |
| 7 | - | FV255340 | | NP | Plate, base | 1 | |
| 8 | - | FV255342 | | NP | Bracket, lamp | 1 | |
| 9 | - | FV255343 | | NP | Gusset | 1 | |
| 10 | - | FV255347 | | NP | Plate, spacing | 1 | |
| 11 | - | FV255348 | | NP | Guard, bracket | 1 | |
| 12 | 8 | FV255337 | | NP | MOUNTING, TAIL LAMP, LEFT | 1 | |
| 13 | - | FV255339 | | NP | Guard | 1 | |
| 14 | - | FV255340 | | NP | Plate, base | 1 | |
| 15 | - | FV255341 | | NP | Bracket, lamp | 1 | |
| 16 | - | FV255343 | | NP | Gusset | 1 | |
| 17 | - | FV255347 | | NP | Plate, spacing | 1 | |
| 18 | - | FV255348 | | NP | Guard, bracket | 1 | |
| 19 | - | | G1 | 5305-99-941-0512 | Screw, precision, UNF-2A, R steel, hex. hd., zinc coated, 1/4 in. x 5/8 in. | 2 |) Tail lamp mountings |
| 20 | - | | G1 | 5310-99-941-0913 | Nut, precision, UNF-2B, A steel, hex., zinc coated, 1/4 in. | 2 | |
| 21 | - | | G1 | 5310-99-941-6654 | Washer, spring, steel, S.T., sq. section, 1/4 in. | 2 | |
| 22 | - | | LV9/BTR | FV239787 | CLIP, JUMPER CABLE | 1 | |
| 23 | - | FV239788 | | NP | Base | 1 | |
| 24 | - | FV239793 | | NP | SPACER; with wing nut | 1 | |
| 25 | - | FV239789 | | NP | Spacer | 1 | |
| 26 | - | FV239792 | | NP | NUT, WING | 1 | |
| 27 | - | | G1 | 5310-99-941-3221 | Nut, wing, UNF-2B, brass, tin plated, 3/8 in. | 1 | |
| 28 | - | | G1 | XB10675 | Washer, plain, steel, zinc coated, 7/16 in. | 1 | |
| 29 | - | | Z2 | XB10354 | Washer, plain, steel, B.A., No. 2 | 1 | |
| 30 | - | FV239793 | | NP | Spacer | 1 | |
| 31 | - | FV239790 | | NP | Latch | 1 | |
| 32 | - | FV239791 | | NP | Collar, hinge | 1 | |
| 33 | - | | G1 | 5310-99-941-0915 | Nut, precision, UNF-2B, A steel, hex., zinc coated, 3/8 in. | 3 |) Spacer to base and latch |
| 34 | - | | G1 | 5310-99-941-7628 | Washer, plain, A steel, zinc coated, 7/8 in. O.D. x 3/8 in. I.D. x 1/16 in. thick | 1 | |
| 35 | - | | G1 | 5310-99-941-6656 | Washer, spring, steel, S.T., sq. section, 3/8 in. | 3 | |

| Item | Plate and Ref.No. | Drawing No. | V.A.O.S. Section | Part No. | Designation | No. Off | Remarks |
|------|-------------------|-------------|------------------|------------------|---|---------|---|
| 1 | C | FV183471 | | NP | DRAUGHT-EYE; with dual overrun lever | 1 | |
| 2 | 14 | | LV9/BTR | FV11513 | BRACKET, DRAUGHT-EYE; with bushes | 1 | |
| 3 | - | | LV9/BTR | FV11512 | Bush, draught-eye bracket | 1 | Ferodo |
| 4 | - | FV11510 | | NP | BRACKET | 1 | |
| 5 | - | FV11506 | | NP | Bracket | 1 | |
| 6 | - | FV11507 | | NP | Tunnel | 1 | |
| 7 | - | FV11508 | | NP | Bush, steel | 2 | |
| 8 | 15 | FV7776 | | NP | Plate, inscription, lubrication | 1 | |
| 9 | - | | G1 | GA10958 | Rivet, steel, boss hd., 1/8 in. x 3/8 in. | 4 | |
| 10 | - | | LV9/BTR | FV7741 | Retainer, bearing, draught-eye bracket | 1 | |
| 11 | 16 | | LV9/BTR | FV183468 | Collar, draught-eye shaft, front | 1 | |
| 12 | 17 | | LV9/BTR | FV183469 | Collar, draught-eye shaft, rear | 1 | |
| 13 | 18 | | LV9/BTR | FV183470 | Draught-eye and shaft | 1 | |
| 14 | 19 | | LV9/BTR | FV11517 | Spring, draught-eye and shaft | 1 | |
| 15 | 20 | | G1 | 5310-99-941-0878 | Nut, precision, UNF-2B, A steel, hex., slotted, zinc coated, 1 in. | 1 | Draught-eye and shaft |
| 16 | 21 | | G1 | 5315-99-942-0400 | Pin, cotter, split, M.S., phosphated, 3/16 in. x 2.1/4 in. | 1 | |
| 17 | - | | LV9/BTR | FV109257 | Plate, blanking, draught-eye | 1 | |
| 18 | - | FV8566 | | NP | Distance-piece | 4 | |
| 19 | 22 | | G1 | 5305-99-941-0327 | Bolt, precision, UNF-2A, R steel, hex. hd., zinc coated, 7/16 in. x 1.3/8 in. | 4 | Draught-eye bracket to draught-eye pivot |
| 20 | 23 | | G1 | 5310-99-941-0916 | Nut, precision, UNF-2B, A steel, hex., zinc coated, 7/16 in. | 4 | |
| 21 | 24 | | G1 | 5310-99-941-6657 | Washer, spring, steel, S.T., sq. section, 7/16 in. | 4 | |
| 22 | 25 | | LV9/BTR | FV183479 | PIVOT, DRAUGHT-EYE | 1 | |
| 23 | - | FV183478 | | NP | Tube, pivot | 1 | |
| 24 | - | FV183477 | | NP | End-piece, pivot | 1 | |
| 25 | - | FV183476 | | NP | Stop, pivot tube | 1 | |
| 26 | - | FV183475 | | NP | Channel, pivot shaft | 2 | |
| 27 | 26 | FV183474 | | NP | Shaft, pivot | 1 | |
| 28 | - | FV183473 | | NP | Rib | 2 | |
| 29 | - | FV183472 | | NP | Plate | 2 | |
| 30 | - | FV11524 | | NP | Saddle | 2 | |
| 31 | - | FV11525 | | NP | Cover, saddle | 2 | |
| 32 | 27 | FV11526 | | NP | Bracket, reverse stop | 1 | |
| 33 | - | FV11522 | | NP | PLATE, BLANKING | 1 | |
| 34 | - | FV11521 | | NP | Plate | 1 | |
| 35 | - | | G1 | 5310-99-941-0912 | Nut, precision, UNF-2B, A steel, hex., zinc coated, 3/8 in. | 1 | Welded to plate |
| 36 | - | | LV9/BTR | FV8363 | Nut, draught-eye, pivot flange | 1 | |
| 37 | - | | LV9/BTR | FV11535 | Washer, lock, draught-eye flange nut | 1 | |
| 38 | - | FV11533 | | NP | Flange, draught-eye pivot | 1 | |
| 39 | - | | LV9/BTR | FV11534 | Key, draught-eye pivot flange | 1 | |
| 40 | - | | LV9/BTR | FV8589 | Dowel, draught-eye flange | 2 | |
| 41 | - | | LV9/BTR | FV11536 | Pad, thrust, draught-eye flange | 1 | |
| 42 | 28 | | LV9/BTR | FV11537 | Plate, damping, draught-eye | 1 | |
| 43 | 29 | | LV9/BTR | FV12787 | Bolt, draught-eye clamp | 2 | |
| 44 | - | | G1 | 5310-99-941-6656 | Washer, spring, steel, S.T., sq. section, 3/8 in. | 2 | |
| 45 | - | | | | OVERRUN BRAKE - | | |
| 46 | - | | LV9/BTR | FV11546 | LEVER, OPERATING, OVERRUN BRAKE | 1 | |
| 47 | - | FV11545 | | NP | Lever | 1 | |
| 48 | - | | LV6/MT1 | 20244 | Bearing, bronze, oil retaining, .6275 in. I.D. x .877 in. O.D. x 1.250 in. | 1 | |
| 49 | - | | LV9/BTR | FV12782 | Distance-piece, overrun brake lever, right | 1 | |
| 50 | - | | LV9/BTR | FV11548 | Distance-piece, overrun brake lever, left | 1 | |
| 51 | - | | LV9/BTR | FV11549 | Cover, dust, overrun brake operating lever | 1 | |

| Item No. | Plate and Ref.No. | Drawing No. | V.A.O.S. Section | Part No. | Designation | No. Off | Remarks | |
|----------|-------------------|-------------|------------------|------------------|--|---------|---------------------------------------|-----------|
| 1 | - | | | | OVERRUN BRAKE - Contd. | | | |
| 2 | - | | LV9/BTR | FV239854 | Shaft, overrun brake operating lever | 1 | } Overrun brake operating lever shaft | |
| 3 | - | | G1 | 5310-99-941-3299 | Nut, stiff, UNF-2B, P steel, hex., fibre insert, std., 1/2 in. | 2 | | |
| 4 | - | | LV9/BTR | FV12784 | Washer, overrun brake operating lever | 1 | | |
| 5 | - | | G1 | XB14272 | Washer, plain, steel, zinc coated, 1/4 in. | 1 | | |
| 6 | - | | LV9/BTR | FV183483 | PLUNGER, OVERRUN BRAKE RELAY LEVER | 1 | | |
| 7 | - | FV183480 | | NP | Tube | 1 | | |
| 8 | - | FV183481 | | NP | Plunger | 1 | | |
| 9 | - | FV183482 | | NP | Fork-end | 1 | | |
| 10 | - | | LV9/BTR | FV183487 | Lever, relay, overrun brake | 2 | | |
| 11 | - | | LV9/BTR | FV183485 | Sleeve, overrun brake relay lever | 2 | | |
| 12 | - | | LV9/BTR | FV183484 | Socket, overrun brake relay lever | 1 | | |
| 13 | - | | LV9/BTR | FV183486 | Button, overrun brake relay lever | 2 | | |
| 14 | - | | G1 | 5310-99-941-0915 | Nut, precision, UNF-2B, A steel, hex., zinc coated, 3/8 in. | 2 | | } Buttons |
| 15 | - | | G1 | 5310-99-941-3299 | Nut, stiff, UNF-2B, P steel, hex., fibre insert, std., 1/2 in. | 2 | | |
| 16 | - | | G1 | XB14577 | Washer, plain, steel, zinc coated, 1/2 in. | 2 | } Relay lever to pivot shaft | |
| 17 | D | FV11557 | | NP | ROD, ACTUATING, BRAKE | 1 | | |
| 18 | 24 | | LV9/BTR | FV11555 | Rod:- Brake lever to compensator | 1 | | |
| 19 | 25 | | LV9/BTR | FV7864 | Fork-end (M.P.P.) | 2 | | |
| 20 | 26 | | G1 | 5310-99-941-0892 | Nut, precision, UNF-2B, A steel, hex., lock, zinc coated, 5/16 in. | 1 | Fork-end | |
| 21 | - | | LV9/BTR | FV7909 | Spring, return, brake rod | 1 | | |
| 22 | - | | LV9/BTR | FV11556 | Pad, brake rod return spring | 1 | | |
| 23 | - | | LV9/BTR | FV7910 | Washer, locating, brake rod return spring | 2 | | |
| 24 | - | | LV9/BTR | FV7911 | Lock, brake rod return spring | 1 | } Return spring lock | |
| 25 | - | | G1 | 5305-99-941-0524 | Screw, precision, UNF-2A, R steel, hex. hd., zinc coated, 5/16 in. x 5/8 in. | 1 | | |
| 26 | - | | LV9/BTR | FV7912 | Nut, brake rod return spring lock screw | 1 | | |
| 27 | - | | LV9/BTR | FV7867 | Pin, fork-end (M.P.P.) | 3 | | |
| 28 | - | | G1 | XB11624 | Washer, plain, steel, zinc coated, 5/16 in. | 6 | | |
| 29 | - | | G1 | 5310-99-941-6628 | Washer, spring, steel, D.T., 5/16 in. | 3 | | |
| 30 | - | | G1 | 5315-99-942-0378 | Pin, cotter, split, M.S., phosphated, 1/16 in. x 3/4 in. | 6 | | |
| 31 | - | | G1 | 5305-99-941-0538 | Screw, precision, UNF-2A, R steel, hex. hd., zinc coated, 3/8 in. x 5/8 in. | 1 | | |
| 32 | - | | G1 | 5310-99-941-6656 | Washer, spring, steel, S.T., sq. section, 3/8 in. | 1 | | |
| 33 | C | | LV9/BTR | FV8054 | STOP, REVERSING; with chain and bracket | 1 | | |
| 34 | 30 | FV7945 | | NP | STOP | 1 | | |
| 35 | - | FV7944 | | NP | Plate | 1 | | |
| 36 | - | FV8051 | | NP | Lug | 1 | | |
| 37 | 31 | | G1 | GA13573 | Chain, steel, Sherardized, single link, 10 S.W.G. | as req. | } 12 in. long | |
| 38 | 32 | FV7614 | | NP | Bracket, chain | 1 | | |

SUSPENSION

| Item No. | Plate and Ref.No. | Drawing No. | V. A. O. S. Section | Part No. | Designation | No. Off | Remarks |
|----------|-------------------|-------------|---------------------|------------------|--|---------|-----------------------------------|
| 1 | F | | | | SPRING, SUSPENSION | 2 | |
| 2 | 1 | | LV9/BTR | FV183131 | LEAF, MAIN; with bush | 2 | |
| 3 | - | | LV9/BTR | FV109233 | Bush, 5/8 in. I.D. x 1.3/8 in. | 4 | |
| 4 | - | | LV6/MT1 | SQ/E2145 | O.D. x 1.3/4 in. x 2 in. | 2 | |
| 5 | - | | LV9/BTR | FV11654 | Plate, clamping, suspension spring | 2 | |
| 6 | - | | LV9/BTR | FV183324 | Bolt, "U", suspension spring | 4 | |
| 7 | - | | G1 | 5310-99-941-0915 | Nut, precision, UNF-2B, A steel, hex., zinc coated, 3/8 in. | 8 | } Suspension springs to axles |
| 8 | - | | G1 | 5310-99-941-0893 | Nut, precision, UNF-2B, A steel, hex., lock, zinc coated, 3/8 in. | 8 | |
| 9 | 2 | | LV9/BTR | FV11647 | BRACKET, SUSPENSION:- Shackle to frame | 2 | |
| 10 | - | FV11643 | | NP | Plate, outer | 2 | |
| 11 | - | FV11644 | | NP | Plate, inner | 2 | |
| 12 | - | FV11637 | | NP | Plate, top | 2 | |
| 13 | - | FV11645 | | NP | Plate, spacing | 4 | |
| 14 | - | FV11646 | | NP | Plate, rib | 4 | |
| 15 | - | FV11636 | | NP | Boss, outer | 2 | |
| 16 | - | FV11639 | | NP | Boss, inner | 2 | |
| 17 | 3 | | LV9/BTR | FV11642 | BRACKET, SUSPENSION:- Frame to spring | 2 | |
| 18 | - | FV11635 | | NP | Plate, outer | 2 | |
| 19 | - | FV11638 | | NP | Plate, inner | 2 | |
| 20 | - | FV11637 | | NP | Plate, top | 2 | |
| 21 | - | FV11640 | | NP | Plate, spacing | 4 | |
| 22 | - | FV11641 | | NP | Plate, rib | 4 | |
| 23 | - | FV11636 | | NP | Boss, outer | 2 | |
| 24 | - | FV11639 | | NP | Boss, inner | 2 | |
| 25 | - | | G1 | 5305-99-941-0526 | Screw, precision, UNF-2A, R steel, hex. hd., zinc coated, 5/16 in. x 7/8 in. | 16 | } Suspension brackets to frame |
| 26 | - | | G1 | 5310-99-941-0914 | Nut, precision, UNF-2B, A steel, hex., zinc coated, 5/16 in. | 16 | |
| 27 | - | | LV9/BTR | FV11653 | Washer, suspension bracket | 16 | |
| 28 | - | | G1 | 5310-99-941-6655 | Washer, spring, steel, S.T., sq. section, 5/16 in. | 16 | |
| 29 | 4 | | LV9/BTR | FV11652 | SHACKLE, SUSPENSION SPRING; with bush | 2 | |
| 30 | - | | LV6/MT1 | SQ/E2145 | Bush, 5/8 in. I.D. x 1.3/8 in. O.D. x 1.3/4 in. x 2 in. | 2 | |
| 31 | - | FV11651 | | NP | SHACKLE | 2 | |
| 32 | - | FV11648 | | NP | Plate, side | 4 | |
| 33 | - | FV11647 | | NP | Tube | 2 | |
| 34 | - | FV11636 | | NP | Boss, outer | 2 | Tapped 5/8 in. UNF |
| 35 | - | FV11639 | | NP | Boss, inner | 2 | |
| 36 | 5 | | G1 | 5305-99-941-0363 | Bolt, precision, UNF-2A, R steel, hex. hd., zinc coated, 5/8 in. x 3.1/4 in. | 6 | } Suspension springs and shackles |
| 37 | 6 | | G1 | 5310-99-941-0897 | Nut, precision, UNF-2B, A steel, hex., lock, zinc coated, 5/8 in. | 6 | |
| 38 | - | | LV9/BTR | FV11656 | Pad, rebound, suspension spring | 4 | |
| 39 | - | | G1 | 5310-99-941-0915 | Nut, precision, UNF-2B, A steel, hex., zinc coated, 3/8 in. | 4 | } Pads to frame |
| 40 | - | | G1 | 5310-99-941-6656 | Washer, spring, steel, S.T., sq. section, 3/8 in. | 4 | |

LEVELLING EQUIPMENT

| Item No. | Plate and Ref.No. | Drawing No. | V.A.O.S. Section | Part No. | Designation | No. Off | Remarks |
|----------|-------------------|-------------|------------------|------------------|---|---------|-------------------------|
| 1 | E | FV11589 | | NP | STAND, SUPPORT, REAR, LEFT | 1 | |
| 2 | 9-16 | FV108606 | | NP | STAND, SUPPORT, REAR, RIGHT | 1 | |
| 3 | | | | | STANDS - | | |
| 4 | 9 | | LV9/BTR | FV11574 | TUBE, SUPPORT STAND, OUTER; with bracket | 2 | |
| 5 | - | FV11572 | | NP | TUBE | 2 | |
| 6 | - | FV11567 | | NP | Tube | 2 | |
| 7 | - | FV11568 | | NP | Runner | 2 | |
| 8 | - | FV11569 | | NP | Plate, blanking | 2 | |
| 9 | - | FV11571 | | NP | Eye-end | 2 | |
| 10 | 10-11 | | LV9/BTR | FV11566 | BRACKET, SUPPORT STAND; with bush | 2 | |
| 11 | 10 | | LV6/MT1 | 20028 | Bearing, bronze, oil retaining, .7545 in. I.D. x .9405 in. O.D. x .75 in. | 4 | |
| 12 | 11 | FV11564 | | NP | Bracket | 2 | |
| 13 | 12 | | LV9/BTR | FV11573 | Pin, pivot:- Stand to bracket | 2 | |
| 14 | - | | G1 | 5315-99-942-3765 | Pin, grooved, M.S., type G.P.3, 3/16 in. x 1.1/4 in. | 2 | |
| 15 | 13 | | LV9/BTR | FV11579 | TUBE, SUPPORT STAND, INNER | 2 | |
| 16 | - | FV11575 | | NP | Tube | 2 | |
| 17 | - | FV11576 | | NP | Foot | 2 | |
| 18 | - | FV11577 | | NP | Plug | 2 | |
| 19 | 14 | | LV9/BTR | FV11587 | BOLT, CLAMP, SUPPORT STAND | 2 | |
| 20 | - | FV11585 | | NP | Bolt | 2 | |
| 21 | - | FV11586 | | NP | Handle | 2 | |
| 22 | 15 | | LV9/BTR | FV11588 | Washer, support stand clamp bolt | 2 | |
| 23 | - | | G1 | 5315-99-942-3765 | Pin, grooved, M.S., type G.P.3, 3/16 in. x 1.1/4 in. | 2 | |
| 24 | 16 | | LV9/BTR | FV11584 | PIN, LOCATING, SUPPORT STAND; with spring and latch | 2 | |
| 25 | - | FV11581 | | NP | PIN, SUPPORT STAND | 2 | |
| 26 | - | FV11580 | | NP | Pin | 2 | |
| 27 | - | | G1 | XB14577 | Washer, plain, steel, zinc coated, 1/2 in. | 2 | |
| 28 | - | FV8268 | | NP | Handle | 2 | |
| 29 | - | | G1 | GA13572 | Chain, steel, No. 4 single link, 14 S.W.G. | as req. | 8 ins. long |
| 30 | - | FV7717 | | NP | Ring, chain | 2 | |
| 31 | - | FV7614 | | NP | Bracket, chain | 2 | |
| 32 | - | FV11583 | | NP | Latch | 2 | |
| 33 | - | | G1 | 5315-99-942-3742 | Pin, grooved, M.S., type G.P.3, 1/8 in. x 1/2 in. | 2 | |
| 34 | - | | LV9/BTR | FV11582 | Spring, support stand locating pin | 2 | |
| 35 | - | | G1 | 5305-99-941-0296 | Bolt, precision, UNF-2A, R steel, hex. hd., zinc coated, 5/16 in. x 1.1/8 in. | 8 | Support stands to frame |
| 36 | - | | G1 | 5310-99-941-0914 | Nut, precision, UNF-2B, A steel, hex., zinc coated, 5/16 in. | 8 | |
| 37 | - | | G1 | 5310-99-941-6655 | Washer, spring, steel, S.T., sq. section, 5/16 in. | 8 | |
| 38 | C | FV137828 | | NP | JACK, SCREW | 1 | |
| 39 | 33 | | LV9/BTR | FV137827 | TUBE, SUPPORT STAND | 1 | |
| 40 | - | FV137826 | | NP | Tube | 1 | |
| 41 | - | FV11571 | | NP | Eye-end | 1 | |
| 42 | - | FV137182 | | NP | Collar, tube | 1 | |
| 43 | 34 | | LV9/BTR | FV11566 | BRACKET, SUPPORT STAND; with bush | 1 | |
| 44 | - | | LV6/MT1 | 20028 | Bearing, bronze, oil retaining, .7545 in. I.D. x .9405 in. O.D. x .75 in. | 2 | |
| 45 | - | FV11564 | | NP | Bracket | 1 | |
| 46 | - | | LV9/BTR | FV11573 | Pin, pivot:- Stand to bracket | 1 | |
| 47 | - | | G1 | 5315-99-942-3765 | Pin, grooved, M.S., type G.P.3, 3/16 in. x 1.1/4 in. | 1 | |
| 48 | 35 | FV137185 | | NP | SHAFT, SCREW; with nut and collar | 1 | |

≠ These units are made interchangeable by removing the locating pin and rotating the tube 180 degrees

TRAILER, 1/2 TON, 2 WHEELED

LEVELLING EQUIPMENT

| Iter | Plate and Ref.No. | Drawing No. | V. A. O. S. Section | Part No. | Designation | No. Off | Remarks |
|------|-------------------|-------------|---------------------|------------------|--|---------|-----------------------------|
| 1 | C | | | | JACK, SCREW - Contd. | | |
| 2 | - | | | | SHAFT, SCREW; with nut and collar - Contd. | | |
| 3 | - | | LV9/BTR | FV12431 | Shaft, screwed, support stand | 1 | |
| 4 | - | | LV9/BTR | FV12427 | Nut, support stand shaft | 1 | |
| 5 | - | | LV9/BTR | FV137184 | Collar, support stand shaft | 1 | |
| 6 | - | | G1 | 5315-99-942-3747 | Pin, grooved, M.S., type G.P.3, 1/8 in. x 1 in. | 2 |) Shaft nut to tube |
| 7 | - | | G1 | 5315-99-942-3775 | Pin, grooved, M.S., type G.P.3, 1/4 in. x 1.1/4 in. | 1 | |
| 8 | 36 | | LV9/BTR | FV12435 | Foot, support stand | 1 |) Collar to shaft |
| 9 | - | | G1 | 5315-99-942-3749 | Pin, grooved, M.S., type G.P.3, 1/8 in. x 1.1/4 in. | 2 | |
| 10 | - | | LV9/BTR | FV11584 | PIN, LOCATING, SUPPORT STAND; with spring and latch | 1 |) Foot to shaft |
| 11 | - | FV11581 | | NP | PIN, SUPPORT STAND | 1 | |
| 12 | - | FV11580 | | NP | Pin | 1 | |
| 13 | - | | G1 | XB14577 | Washer, plain, steel, zinc coated, 1/2 in. | 1 | |
| 14 | - | FV8268 | | NP | Handle | 1 | |
| 15 | 37 | | G1 | GA13572 | Chain, steel, No. 4 single link, 14 S.W.G. | as req. | |
| 16 | - | FV7717 | | NP | Ring, chain | 1 | |
| 17 | - | FV7614 | | NP | Bracket, chain | 1 | |
| 18 | - | FV11583 | | NP | Latch | 1 | |
| 19 | - | | G1 | 5315-99-942-3743 | Pin, grooved, M.S., type G.P.3, 1/8 in. x 1/2 in. | 1 | |
| 20 | - | | LV9/BTR | FV11582 | Spring, support stand locating pin | 1 | |
| 21 | - | | G1 | 5305-99-941-0295 | Bolt, precision, UNF-2A, R steel, hex. hd., zinc coated, 5/16 in. x 1.00 in. | 4 |) Screw jack to frame |
| 22 | - | | G1 | 5310-99-941-0914 | Nut, precision, UNF-2B, A steel, hex., zinc coated, 5/16 in. | 4 | |
| 23 | - | | G1 | 5310-99-941-6655 | Washer, spring, steel, S.T., sq. section, 5/16 in. | 4 | |

TRAILER, 1/2 TON, 2 WHEELED

ELECTRICAL EQUIPMENT

13.

| Item No. | Plate and Ref. No. | Drawing No. | V. A. O. S. Section | Part No. | Designation | No. Off | Remarks |
|----------|--------------------|-------------|---------------------|-----------|---|-----------------|---------|
| 1 | - | FV137321 | | NP | CABLES - | | |
| 2 | - | FV166001 | | NP | HARNESSE, CABLE | 1 | |
| 3 | - | /7 | | NP | | | |
| 4 | - | | Y3 | 5E/3040 | CABLE:- Tail to tail, 1 ft. 10 in. long Cable, electric, L.T., Unipren 12 | 1 as req. | |
| 5 | - | FV175700 | | NP | Sleeve, ident. "Cat. No." | 1 | |
| 6 | - | /50 | | NP | Sleeve, ident. "Tail Lamp" | 2 | |
| 7 | - | FV175700 | LV6/MT4 | LU/861122 | Nipple, connector, 10A. | 2 | |
| 8 | - | /4 | | NP | | | |
| 9 | - | FV166001 | | NP | CABLE:- Tail to tail, 3 ft. 3 in. long Cable, electric, L.T., Unipren 12 | 1 as req. | |
| 10 | - | /60 | Y3 | 5E/3040 | | | |
| 11 | - | FV175700 | | NP | Sleeve, ident. "Cat. No." | 1 | |
| 12 | - | /50 | | NP | Sleeve, ident. "Tail Lamp" | 2 | |
| 13 | - | FV175700 | LV6/MT4 | LU/861122 | Nipple, connector, 10A. | 2 | |
| 14 | - | /4 | | NP | | | |
| 15 | - | FV166002 | | NP | CABLE:- Tail to tail, 1 ft. 7 in. long Cable, electric, L.T., Unipren 12 | 1 as req. | |
| 16 | - | /61 | Y3 | 5E/3040 | | | |
| 17 | - | FV175700 | | NP | Sleeve, ident. "Cat. No." | 1 | |
| 18 | - | /50 | | NP | Sleeve, ident. "Tail Lamp" | 2 | |
| 19 | - | FV175700 | LV6/MT4 | LU/861122 | Nipple, connector, 10A. | 1 | |
| 20 | - | /4 | | NP | | | |
| 21 | - | FV166002 | | NP | CABLE:- Tail to tail, 5 ft. 9 in. long Cable, electric, L.T., Unipren 12 | 1 as req. | |
| 22 | - | /12 | Y3 | 5E/3040 | | | |
| 23 | - | FV175700 | | NP | Sleeve, ident. "Cat. No." | 1 | |
| 24 | - | /50 | | NP | Sleeve, ident. "Tail Lamp" | 2 | |
| 25 | - | FV175700 | LV6/MT4 | LU/861122 | Nipple, connector, 10A. | 1 | |
| 26 | - | /4 | | NP | CABLE:- Number plate to number plate, 5 ft. long Cable, electric, L.T., Unipren 12 | 1 as req. | |
| 27 | - | 166001/57 | Y3 | 5E/3040 | | | |
| 28 | - | FV175700 | | NP | Sleeve, ident. "Cat. No." | 1 | |
| 29 | - | /50 | | NP | Sleeve, ident. "Tail Lamp" | 2 | |
| 30 | - | FV175700 | LV6/MT4 | LU/861122 | Nipple, connector, 10A. | 2 | |
| 31 | - | /4 | | NP | | | |
| 32 | - | FV166001 | | NP | CABLE:- Number plate to number plate, 6 ft. long Cable, electric, L.T., Unipren 12 | 2 as req. | |
| 33 | - | /61 | Y3 | 5E/3040 | | | |
| 34 | - | FV175700 | | NP | Sleeve, ident. "Cat. No." | 1 | |
| 35 | - | /50 | | NP | Sleeve, ident. "Tail Lamp" | 2 | |
| 36 | - | FV175700 | LV6/MT4 | LU/861122 | Nipple, connector, 10A. | 2 | |
| 37 | - | /4 | | NP | | | |
| 38 | - | FV166002 | | NP | CABLE:- Number plate to number plate, 4 ft. 2 in. long Cable, electric, L.T., Unipren 12 | 1 as req. | |
| 39 | - | /62 | Y3 | 5E/3040 | | | |

TRAILER, 1/2 TON, 2 WHEELED

ELECTRICAL EQUIPMENT

| Item | Plate and Ref.No. | Drawing No. | V.A.O.S. Section | Part No. | Designation | No. Off | Remarks |
|------|-------------------|--------------|------------------|------------------|---|---------|---|
| 1 | | | | | CABLES - Contd. | | |
| 2 | | | | | HARNESS, CABLE - Contd. | | |
| 3 | | | | | CABLE:- Number plate to number plate, 4 ft. 2 in. long - Contd. | | |
| 4 | - | FV175700 | | NP | Label, ident. | 1 | |
| 5 | - | FV175700 /50 | | NP | Sleeve, ident. "Cat. No." | 2 | |
| 6 | - | | LV6/MT4 | LU/861122 | Nipple, connector, 10A. | 1 | |
| 7 | - | FV166002 /63 | | NP | CABLE:- Convoy lamp to convoy lamp, 6 ft. 2 in. long | 1 | |
| 8 | - | | Y3 | 5E/3040 | Cable, electric, L.T., Unipren 12 | as req. | |
| 9 | - | FV175700 /50 | | NP | Sleeve, ident. "Cat. No." | 1 | |
| 10 | - | FV175700 /5 | | NP | Sleeve, ident. "N.P.L." | 2 | |
| 11 | - | | LV6/MT4 | LU/861122 | Nipple, connector, 10A. | 1 | |
| 12 | - | | LV6/MT4 | WR/3168 | Cable, jumper, 6 ft. long | 1 | |
| 13 | - | | | | CABLE FITTINGS - | | |
| 14 | - | | LV6/MT4 | LU/860369 | Plug, dummy | 3 | |
| 15 | - | | LV6/MT4 | LU/860363 | Connector, single | 2 | |
| 16 | - | | LV6/MT4 | LU/860364 | Connector, double, 10A. | 8 | |
| 17 | - | | LV9/BTR | FV136827 | Clip, cable | as req. | |
| 18 | - | | LV9/BTR | FV13462 | Clip, cable | as req. | |
| 19 | - | | LV9/BTR | FV183132 | Clip, cable | as req. | |
| 20 | - | | LV9/BTR | FV137041 | Clip, cable | as req. | |
| 21 | - | | LV9/BTR | FV137043 | Clip, cable | as req. | |
| 22 | - | | LV9/BTR | FV137045 | Clip, cable | as req. | |
| 23 | - | | LV9/BTR | FV136828 | Clip, cable | as req. | |
| 24 | - | | G1 | 5305-99-941-6833 | Screw, machine, B.A., A steel, hex. hd., Cad. plated, No. 2 x 1/2 in. | as req. | Cable clips to frame |
| 25 | - | | G1 | 5310-99-941-7070 | Nut, B.A., A steel, hex., Cad. plated, No. 2 | as req. | |
| 26 | - | | G1 | 5310-99-941-6643 | Washer, spring, steel, S.T., Cad. plated, B.A. No. 2 | as req. | |
| 27 | - | | G1 | 5310-99-941-7072 | Washer, plain, steel, Cad. plated, 1/4 in. | 1 | Cable clip to trailer socket mounting screw |
| 28 | - | FV255257 | | NP | SOCKET, TRAILER; with conduit | 2 | |
| 29 | - | | LV9/BTR | FV255260 | CONDUIT; with clips | 2 | |
| 30 | - | FV255258 | G2 | GB16292 | Tubing, seamless, cold drawn 5/8 in. O.D., 18 S.W.G. | as req. | |
| 31 | - | FV255259 | | NP | Clip | 2 | |
| 32 | G | FV157951 | LV6/MT4 | WR/2131 | SOCKET, TRAILER, NO. 1, MK. 1 | 2 | 1 - Front 1 - Rear |
| 33 | 1 | | LV6/MT4 | WR/2132/1 | Nut, gland | 2 | |
| 34 | 2 | | LV6/MT4 | WR/2132/2 | Ferrule, cable harness | 2 | |
| 35 | 3 | | LV6/MT4 | WR/2132/3 | Gland, rubber | 2 | |
| 36 | 4 | | LV6/MT4 | WR/2132/4 | Cover, back | 2 | |
| 37 | 5 | | LV6/MT4 | WR/2132/5 | Ring, sealing, rubber | 4 | Front and back covers |
| 38 | 6-7 | | LV6/MT4 | WR/2132/6 | COVER, FRONT; with chain | 2 | |

TRAILER, 1/2 TON, 2 WHEELED

| Item No. | Plate and Ref.No. | Drawing No. | V.A.O.S. Section | Part No. | Designation | No. Off | Remarks |
|----------|-------------------|-------------|------------------|------------------|---|---------|---|
| 1 | G | | | | CABLE FITTINGS - Contd. | | |
| 2 | | | | | SOCKET, TRAILER; with conduit | | |
| 3 | | | | | - Contd. | | |
| 4 | | | | | SOCKET, TRAILER, NO. 1, MK. 1 | | |
| 5 | 6 | 2132/7 | | NP | - Contd. | 2 | |
| 6 | 7 | 2132/8 | | NP | COVER, FRONT; with chain | 2 | |
| 7 | 8 | | Z2 | ZB12499 | - Contd. | | |
| 8 | 9 | | LV6/MT4 | WR/2132/10 | Cover | 4 | Socket to housing |
| 9 | - | | Z2 | ZB10278 | Chain | 1 | |
| 10 | - | | Z2 | ZB11844 | Screw, B.A., steel, csk. hd., No. 2 x 3/8 in. | 4 | Cable clamps and blade to socket |
| 11 | - | | Z2 | ZB11478 | SOCKET; with contacts | 4 | |
| 12 | - | 1744 | | NP | Screw, B.A., brass, inst. hd., No. 2 x 3/4 in. | 4 | |
| 13 | - | 1743 | | NP | Nut, B.A., brass, hex., No. 2 | 4 | |
| 14 | - | 11206 | | NP | Washer, Shakeproof, steel, int., B.A., No. 2 | 4 | |
| 15 | 10-11 | | LV6/MT4 | WR/2132/12 | Clamp, cable, top | 4 | |
| 16 | 10 | | Y3 | 5E/3040 | Clamp, cable, bottom | 4 | |
| 17 | - | | LV6/MT4 | LU/861122 | Blade, contact | 4 | |
| 18 | - | 805792 | | NP | HARNESSE, CABLE | 1 | |
| 19 | - | RC No.81 | | NP | Cable, electric, L.T., Unipren 12 | as req. | |
| 20 | 11 | 2132/14 | | NP | Nipple, cable, 10A. | 6 | |
| 21 | 12 | 2132/11 | | NP | Sleeve, ident. | 8 | |
| 22 | - | | LV6/MT4 | WR/2132/9 | Terminal, eyelet, brass 3/8 in. | 2 | Earth terminal |
| 23 | - | | G1 | XUS/304/6R | Sleeving, P.V.C., 9.5 mm. O.D. x 8.5 mm. bore | as req. | |
| 24 | - | | G1 | 5310-99-941-0913 | Housing, socket | 2 | |
| 25 | - | | G1 | 5310-99-941-6644 | Plug, retaining, front cover | 2 | |
| 26 | - | FV137007 | | NP | Screw, UNF-2A, R steel, 90 deg. csk. hd., slotted, zinc coated, 1/4 in. x 3/4 in. | 8 | Sockets to brackets |
| 27 | - | | G1 | XUS/304/6R | Nut, precision, UNF-2B, A steel, hex., zinc coated, 1/4 in. | 8 | |
| 28 | - | | G1 | 5310-99-941-0913 | Washer, spring, steel, S.T., Cad. plated, 1/4 in. | 8 | |
| 29 | - | | G1 | 5310-99-941-6644 | Bracket, trailer socket | 1 | |
| 30 | - | | G1 | 5305-99-941-0539 | Screw, UNF-2A, R steel, 90 deg., csk. hd., slotted, zinc coated, 1/4 in. x 1 in. | 4 | Trailer socket front cover plugs to brackets or frame |
| 31 | - | | G1 | 5310-99-941-0915 | Nut, precision, UNF-2B, A steel, hex., zinc coated, 1/4 in. | 4 | |
| 32 | - | | G1 | 5310-99-941-6646 | Washer, spring, steel, S.T., Cad. plated, 1/4 in. | 4 | |
| 33 | - | | G1 | 5305-99-941-8456 | Screw, precision, UNF-2A, R steel, hex. hd., zinc coated, 3/8 in. x 3/4 in. | 3 | Trailer socket bracket to frame |
| 34 | - | | G1 | 5310-99-941-7072 | Nut, precision, UNF-2B, A steel, hex., zinc coated, 3/8 in. | 3 | |
| 35 | H | | | | Washer, spring, steel, S.T., Cad. plated, 3/8 in. | 3 | |
| 36 | 1-20 | FV14932 | LV6/MT3 | LU/53187A | Screw, self-tapping, steel, hex. hd., zinc coated, No. 14 x 3/8 in. | 2 | Trailer socket cover chain to frame |
| 37 | 1-5 | | LV6/MT3 | LU/573064 | Washer, plain, steel, Cad. plated, 1/4 in. | 2 | |
| 38 | 1 | 571745 | | NP | | | |
| 39 | 2 | 571746 | | NP | | | |
| | | | | | LAMPS AND FITTINGS - | | |
| | | | | | LAMP, TAIL | 2 | No. 2, Mk. 1 |
| | | | | | LENS; with front cover | 2 | |
| | | | | | Lens, ruby | 2 | |
| | | | | | Gasket; lens to rim | 2 | |

TRAILER, 1/2 TON, 2 WHEELED

| Item | Plate and Ref. No. | Drawing No. | V.A.O.S. Section | Part No. | Designation | No. Off | Remarks |
|------|--------------------|-------------|------------------|------------------|--|---------|--|
| 1 | H | | | | LAMPS AND FITTINGS - Contd. | | |
| 2 | | | | | LAMP, TAIL - Contd. | | |
| 3 | | | | | LENS; with front cover - Contd. | | |
| 4 | 3 | 571737 | | NP | Washer; lens to cover | 2 | |
| 5 | 4 | 571734 | | NP | Rim, front | 2 | |
| 6 | 5 | 573063 | | NP | Cover, front | 2 | |
| 7 | 6 | | Z2 | ZB13270 | Screw, B.A., brass, rd. hd., No. 4 x 5/16 in. | 6 | } Front cover to back- plate |
| 8 | 7 | | Z2 | ZB11479 | Washer, Shakeproof, steel, int., flat, B.A., No. 4 | 6 | |
| 9 | 8 | | LV6/MT3 | LU/573062 | Gasket, rubber | 2 | |
| 10 | 9 | | LV6/MT3 | LU/445721 | Nut, cable entry | 2 | |
| 11 | 10 | | LV6/MT3 | LU/573075 | Ferrule, cable | 2 | |
| 12 | 11 | 573049 | | NP | Ring, locking, outer case | 2 | |
| 13 | 12 | 573052 | | NP | BUSH; with outer case | 2 | |
| 14 | - | | LV6/MT3 | LU/573051 | Bush, cable entry | 2 | |
| 15 | - | 573050 | | NP | Case, outer | 2 | |
| 16 | 13 | | LV6/MT3 | LU/573043 | Mounting, rubber, rear | 2 | |
| 17 | 14 | 573040 | | NP | Cup, adaptor | 2 | |
| 18 | 15 | | LV6/MT3 | LU/573074 | Washer, rubber | 2 | } Adaptor |
| 19 | 16 | | LV6/MT3 | LU/552103 | Interior, adaptor | 2 | |
| 20 | 17 | 573039 | | NP | Sleeve, adaptor | 2 | |
| 21 | 18 | 573066 | | NP | Ring, earthing | 2 | |
| 22 | 19 | | LV6/MT3 | LU/573042 | Mounting, rubber, front | 2 | |
| 23 | 20 | 573046 | | NP | Backplate; with bush | 2 | |
| 24 | 21 | | LV6/MT3 | 6240-99-995-2242 | Lamp, filament, 6V., 6W., S.C.C., "G" shape, clear | 2 | } Demand to suit |
| 25 | 21 | | LV6/MT3 | 6240-99-995-2245 | Lamp, filament, 12V., 6W., S.C.C., "G" shape, clear | 2 | |
| 26 | 21 | | LV6/MT3 | 6240-99-995-2236 | Lamp, filament, 26V., 6W., S.C.C., "G" shape, clear | 2 | |
| 27 | - | | Z2 | ZB11455 | Screw, B.A., steel, rd. hd., No. 4 x 1/2 in. | 6 | } Tail- lamps to brackets |
| 28 | - | | Z2 | ZB10072 | Nut, B.A., steel, hex., Cad. plated, No. 4 | 6 | |
| 29 | - | | G1 | 5310-99-941-6642 | Washer, spring, steel, S.T., Cad. plated, B.A., No. 4 | 6 | |
| 30 | - | FV137209 | | NP | Bracket, tail lamp, left | 1 | |
| 31 | - | FV137208 | | NP | Bracket, tail lamp, right | 1 | |
| 32 | 22-38 | FV14933 | LV6/MT3 | LU/53189B | LAMP, NUMBER-PLATE; with light shield | 2 | } Also convoy lamp |
| 33 | 22 | | LV6/MT3 | LU/573065 | COVER; with light shield | 2 | |
| 34 | - | 573087 | | NP | Peg | 2 | |
| 35 | - | 573086 | | NP | Shield | 2 | |
| 36 | - | 573088 | | NP | Spring | 2 | |
| 37 | 23 | | Z2 | ZB13270 | Screw, brass, rd. hd., tinned, B.A., No. 4 x 5/16 in. | 6 | } Light- shield to backplate |
| | 24 | | Z2 | ZB11479 | Washer, Shakeproof, steel, int., B.A., No. 4 | 6 | |
| 39 | 25 | | LV6/MT3 | LU/573055 | Glass, number-plate lamp | 2 | |
| 40 | 26 | | LV6/MT3 | LU/573053 | Gasket, cover to backplate | 2 | |
| 41 | 27 | | LV6/MT3 | LU/445721 | Nut, cable entry | 2 | |
| 42 | 28 | | LV6/MT3 | LU/573075 | Ferrule, cable | 2 | |
| 43 | 29 | 573049 | | NP | Ring, locking, outer case | 2 | |
| 44 | 30 | 573052 | | NP | BUSH; with outer case | 2 | |
| 45 | - | | LV6/MT3 | LU/573051 | Bush, cable entry | 2 | |
| 46 | - | 573050 | | NP | Case | 2 | |
| 47 | 31 | | LV6/MT3 | LU/573043 | Mounting, rubber, rear | 2 | |
| 48 | 32 | 573040 | | NP | Cup, adaptor | 2 | |
| 49 | 33 | | LV6/MT3 | LU/573074 | Washer, rubber | 2 | } Adaptor |
| 50 | 34 | | LV6/MT3 | LU/552103 | Interior, adaptor | 2 | |
| 51 | 35 | 573039 | | NP | Sleeve, adaptor | 2 | |
| 52 | 36 | 573066 | | NP | Ring, earthing | 2 | |
| 53 | 37 | | LV6/MT3 | LU/573042 | Mounting, rubber, front | 2 | |
| 54 | 38 | 573046 | | NP | Backplate; including bush | 2 | |

ELECTRICAL EQUIPMENT

17.

| Item No. | Plate and Ref.No. | Drawing No. | V.A.O.S. Section | Part No. | Designation | No. Off | Remarks |
|----------|-------------------|-------------|------------------|------------------|---|---------|---|
| 1 | H | | | | LAMPS AND FITTINGS - Contd. | | |
| 2 | 39 | | LV6/MT3 | 6240-99-995-2242 | Lamp, filament, 6V., 6W., S.C.C., "G" shape, clear | 2 | } Demand to suit |
| 3 | 39 | | LV6/MT3 | 6240-99-995-2245 | Lamp, filament, 12V., 6W., S.C.C., "G" shape, clear | 2 | |
| 4 | 39 | | LV6/MT3 | 6240-99-995-2236 | Lamp, filament, 26V., 6W., S.C.C., "G" shape, clear | 2 | |
| 5 | - | | Z2 | ZB11455 | Screw, B.A., steel, rd. hd., No. 4 x 1/2 in. | 12 | } Number-plate and convoy lamps to brackets |
| 6 | -- | | Z2 | ZB10072 | Nut, B.A., steel, hex., Cad. plated, No. 4 | 12 | |
| 7 | - | | G1 | 5310-99-941-6642 | Washer, spring, steel, S.T., Cad. plated, B.A., No. 4 | 12 | } Convoy-plate to bracket |
| 8 | - | | LV9/BTR | FV227106 | Plate, convoy | 1 | |
| 9 | - | | G1 | GA14318 | Screw, B.S.W., steel, rd. hd., 1/4 in. x 3/4 in. | 2 | } Convoy-plate to bracket |
| 10 | - | | G1 | XB14845 | Nut, B.S.W., steel, hex., 1/4 in. | 2 | |
| 11 | - | | G1 | 5310-99-941-6644 | Washer, spring, steel, S.T., Cad. plated, 1/4 in. | 2 | } Convoy-plate to bracket |
| 12 | - | | LV6/MT1 | 87555 | Plate, trailer, reflector, triangular | 1 | |
| 13 | - | FV159906 | | NP | Reflector, red, No. 3, Mk. 1 | 2 | Mk. 2 Frame |
| 14 | - | | LV6/MT3 | 9905-99-942-6893 | Reflector, indicating, clearance, red, 3.1/2 in. | 1 | Mk. 1 Frame |

TRAILER, 1/2 TON, 2 WHEELED

29/9/2009

| Item No. | Plate and Ref.No. | Drawing No. | V. A. O. S. Section | Part No. | Designation | No. Off | Remarks |
|----------|-------------------|-------------|---------------------|------------------|---|---------|-----------------------|
| 1 | - | FV11766 | | NP | BODY - | 1 | Mk. 1 Frame |
| 2 | - | FV11757 | | NP | FLOORPLATE | 1 | |
| 3 | - | FV12614 | | NP | Ring, lashing | 10 | |
| 4 | - | FV11744 | | NP | Member, mounting, front and rear | 4 | |
| 5 | - | FV11740 | | NP | Member, mounting, intermediate front left and rear right | 2 | |
| 6 | - | FV11742 | | NP | Member, mounting, intermediate, front right and rear left | 2 | |
| 7 | - | FV11746 | | NP | Member, mounting, centre | 2 | |
| 8 | - | FV11726 | | NP | PANEL-FRONT | 1 | |
| 9 | - | FV11723 | | NP | Panel | 1 | |
| 10 | - | | LV9/BTR | FV7608 | Hook, lashing | 2 | |
| 11 | - | FV11719 | | NP | Stiffener, hook | 2 | |
| 12 | - | | LV9/BTR | FV7609 | Cleat | 2 | |
| 13 | - | FV11728 | | NP | Stiffener, cleat | 2 | |
| 14 | - | | G1 | GA10995 | Rivet, steel, boss hd., 1/4 in. x 5/8 in. | 8 | |
| 15 | - | | LV6/MT1 | 9905-99-942-6894 | Sign, bridge, 9 in. dia. | 1 | |
| 16 | - | FV7774 | | NP | Distance piece, bridge sign | 3 | |
| 17 | - | | G1 | GA10959 | Rivet, steel, boss hd., 1/8 in. x 1/2 in. | 3 | |
| 18 | - | FV11725 | | NP | BOSS, TAPPED | 2 | } Front rubber buffer |
| 19 | - | FV12104 | | NP | Plate | 2 | |
| 20 | - | | Z2 | ZB11992 | Nut, steel, hex., B.A., No. 2 | 2 | |
| 21 | - | FV11722 | | NP | PANEL, SIDE, LEFT | 1 | |
| 22 | - | FV11721 | | NP | Panel | 1 | |
| 23 | - | | LV9/BTR | FV7608 | Hook, lashing | 4 | |
| 24 | - | FV11719 | | NP | Stiffener, hook | 4 | |
| 25 | - | | G1 | GA10995 | Rivet, steel, boss hd., 1/4 in. x 5/8 in. | 8 | |
| 26 | - | FV8020 | | NP | Plate, tyre pressure | 1 | |
| 27 | - | | G1 | GA10956 | Rivet, steel, boss hd., 1/8 in. x 1/4 in. | 2 | |
| 28 | - | FV7778 | | NP | Plate, inscription | 1 | |
| 29 | - | | G1 | GA10956 | Rivet, steel, boss hd., 1/8 in. x 1/4 in. | 4 | |
| 30 | - | FV8065 | | NP | Plate, Part No. | 1 | |
| 31 | - | | G1 | GA10956 | Rivet, steel, boss hd., 1/8 in. x 1/4 in. | 2 | |
| 32 | - | FV11720 | | NP | PANEL, SIDE, RIGHT | 1 | |
| 33 | - | FV11718 | | NP | Panel | 1 | |
| 34 | - | | LV9/BTR | FV7608 | Hook, lashing | 4 | |
| 35 | - | FV11719 | | NP | Stiffener, hook | 4 | |
| 36 | - | | G1 | GA10995 | Rivet, steel, boss hd., 1/4 in. x 5/8 in. | 8 | |
| 37 | - | FV8020 | | NP | Plate, tyre pressure | 1 | |
| 38 | - | | G1 | GA10956 | Rivet, steel, boss hd., 1/8 in. x 1/4 in. | 2 | |
| 39 | - | FV11730 | | NP | PANEL, REAR | 1 | |
| 40 | - | FV11727 | | NP | Panel | 1 | |
| 41 | - | | LV9/BTR | FV7608 | Hook, lashing | 2 | |
| 42 | - | FV11719 | | NP | Stiffener, hook | 2 | |
| 43 | - | | G1 | GA10956 | Rivet, steel, boss hd., 1/4 in. x 5/8 in. | 4 | |
| 44 | - | | LV9/BTR | FV7609 | Cleat | 2 | |
| 45 | - | FV11728 | | NP | Stiffener, cleat | 2 | |
| 46 | - | | | | Rivet, steel, boss hd., 1/4 in. x 5/8 in. | 4 | |
| 47 | - | FV137012 | | NP | BRACKET, LAMP | 1 | |
| 48 | - | FV137010 | | NP | Plate | 1 | |
| 49 | - | FV137011 | | NP | Rib | 2 | |
| 50 | - | FV173040 | | NP | Plate, backing, lamp bracket | 1 | |
| 51 | - | | G1 | GA10979 | Rivet, steel, boss hd., 3/16 in. x 5/8 in. | 4 | |
| 52 | - | FV11725 | | NP | BOSS, TAPPED | 12 | |
| 53 | - | FV12104 | | NP | Plate | 12 | |

| Item No. | Plate and Ref.No. | Drawing No. | V. A. O. S. Section | Part No. | Designation | No. Off | Remarks |
|----------|-------------------|-------------|---------------------|------------------|--|---------|-----------------------------|
| 1 | | | | | BODY - Contd. | | |
| 2 | | | | | PANEL, REAR - Contd. | | |
| 3 | | | | | BOSS, TAPPED - Contd. | | |
| 4 | | | Z2 | ZB11992 | Nut, steel, hex., B.A., No. 2 | 12 | |
| 5 | | FV11763 | | NP | WHEELBOX | 2 | |
| 6 | | FV11735 | | NP | Ring, lashing | 2 | |
| 7 | | FV11769 | | NP | Hook, holding down | 10 | |
| 8 | | | G1 | 5310-99-941-0913 | Nut, precision, UNF-2B, A steel, hex., zinc coated, 1/4 in. | 10 | } Hooks |
| 9 | | | G1 | 5310-99-941-0891 | Nut, precision, UNF-2B, A steel, hex., lock, zinc coated, 1/4 in. | 10 | |
| 10 | | FV13423 | | NP | Washer, holding down hook | 10 | |
| 11 | | FV12791 | | NP | Support, centre | 1 | |
| 12 | | | G1 | 5305-99-941-0524 | Screw, precision, UNF-2A, R steel, hex. hd., zinc coated, 5/16 in. x 5/8 in. | 2 | } Centre support |
| 13 | | | G1 | 5310-99-941-0914 | Nut, precision, UNF-2B, A steel, hex., zinc coated, 5/16 in. | 2 | |
| 14 | | | G1 | XB11624 | Washer, plain, A steel, zinc coated, 5/16 in. | 2 | |
| 15 | | | G1 | 5310-99-941-6655 | Washer, spring, steel, S.T., sq. section, 5/16 in. | 2 | } Drain plug |
| 16 | | | LV6/MT1 | 17301 | Plug, brass, B.S.P., 1/2 in.; with collar | 6 | |
| 17 | | | M3 | MC8069 | Washer, copper and asbestos, B.S.P., 1/2 in. | 6 | |
| 18 | | FV137825 | | NP | Buffer, jack, front | 1 | Rubber |
| 19 | | | Z2 | ZB0386 | Screw, steel, hex. hd., B.A., No. 2 x 3/8 in. | 2 | |
| 20 | | | G1 | 5310-99-941-6653 | Washer, spring, steel, S.T., sq. section, 3/16 in. | 2 | |
| 21 | | FV11770 | | NP | Buffer, stand | 2 | Rubber |
| 22 | | | Z2 | ZB0386 | Screw, steel, hex. hd., B.A., No. 2 x 3/8 in. | 4 | |
| 23 | | | G1 | 5310-99-941-6653 | Washer, spring, steel, S.T., sq. section, 3/16 in. | 4 | |
| 24 | | FV7779 | | NP | Plate, centre of gravity | 2 | |
| 25 | | | G1 | GA10956 | Rivet, steel, boss hd., 1/8 in. x 1/4 in. | 4 | |
| 26 | | FV11768 | | NP | PLATE, REGISTRATION NUMBER | 1 | |
| 27 | | FV8050 | | NP | Plate | 1 | |
| 28 | | FV11767 | | NP | Bracket | 2 | |
| 29 | | | G1 | GA10956 | Rivet, steel, boss hd., 1/8 in. x 1/4 in. | 4 | } Registration number plate |
| 30 | | | Z2 | ZB0386 | Screw, steel, hex. hd., B.A., No. 2 | 4 | |
| 31 | | | G1 | 5310-99-941-6653 | Washer, spring, steel, S.T., sq. section, 3/16 in. | 4 | |
| 32 | | FV108687 | | NP | Duckboard | 1 | |
| 33 | | | LV9/BTR | FV11771 | Cover, canvas, body | 1 | |
| 34 | E | | | | BODY - | | |
| 35 | 17 | FV255267 | | NP | FLOORPLATE | 1 | } Mk. 2 Frame |
| 36 | | FV255269 | | NP | Ring, lashing | 10 | |
| 37 | | FV255278 | | NP | Member, mounting, front and rear centre | 2 | |
| 38 | | FV255271 | | NP | Member, mounting, outer | 8 | |
| 39 | | FV255274 | | NP | PANEL, FRONT | 1 | |
| 40 | | FV255290 | | NP | PANEL | 1 | |
| 41 | | FV255291 | | NP | Panel | 1 | |
| 42 | | FV255292 | | NP | Rail, top | 1 | |
| 43 | | FV255300 | | NP | Hook, lashing | 4 | |
| 44 | | | LV9/BTR | FV7608 | Stiffener, hook | 4 | |
| 45 | | FV11719 | | NP | Cleat | 4 | |
| 46 | | | LV9/BTR | FV7609 | Stiffener, cleat | 4 | |
| 47 | | FV11728 | | NP | | 4 | |

BODY AND FITTINGS

| Item | Plate and Ref.No. | Drawing No. | V. A. O. S. Section | Part No. | Designation | No. Off | Remarks |
|------|-------------------|-------------|---------------------|------------------|--|---------|-----------------------|
| 1 | E | | | | BODY - Contd. | | |
| 2 | | | | | PANEL, FRONT - Contd. | | |
| 3 | - | | G1 | GA10995 | Rivet, steel, boss hd., 1/4 in. x 5/8 in. | 16 | Hooks and cleats |
| 4 | - | | LV6/MT1 | 9905-99-942-6894 | Sign, bridge, 9 in. dia. | 1 | |
| 5 | - | FV7774 | | NP | Distance-piece, bridge sign | 3 | |
| 6 | - | | G1 | GA10959 | Rivet, steel, boss hd., 1/8 in. x 1/2 in. | 3 | |
| 7 | - | FV255293 | | NP | PANEL, SIDE, LEFT | 1 | |
| 8 | - | FV255294 | | NP | PANEL | 1 | |
| 9 | - | FV255295 | | NP | Panel | 1 | |
| 10 | - | FV255299 | | NP | Rail, top | 1 | |
| 11 | - | | LV9/BTR | FV7608 | Hook, lashing | 4 | |
| 12 | - | FV11719 | | NP | Stiffener, hook | 4 | |
| 13 | - | | G1 | GA10995 | Rivet, steel, boss hd., 1/4 in. x 5/8 in. | 8 | Hook stiffener |
| 14 | - | FV7779 | | NP | Plate, centre of gravity | 1 | |
| 15 | - | FV8065 | | NP | Plate, inscription | 1 | |
| 16 | - | | G1 | GA10959 | Rivet, steel, boss hd., 1/8 in. x 1/4 in. | 4 | |
| 17 | - | FV255296 | | NP | PANEL, SIDE, RIGHT | 1 | |
| 18 | - | FV255297 | | NP | PANEL | 1 | |
| 19 | - | FV255298 | | NP | Panel | 1 | |
| 20 | - | FV255299 | | NP | Rail, top | 1 | |
| 21 | 18 | | LV9/BTR | FV7608 | Hook, lashing | 4 | |
| 22 | - | FV11719 | | NP | Stiffener | 4 | |
| 23 | - | | G1 | GA10995 | Rivet, steel, boss hd., 1/4 in. x 5/8 in. | 8 | |
| 24 | 19 | FV7779 | | NP | Plate, centre of gravity | 1 | |
| 25 | - | | G1 | GA10956 | Rivet, steel, boss hd., 1/8 in. x 1/4 in. | 2 | |
| 26 | - | FV255282 | | NP | PANEL, REAR | 1 | |
| 27 | - | FV255283 | | NP | PANEL | 1 | |
| 28 | - | FV255284 | | NP | Panel | 1 | |
| 29 | - | FV255300 | | NP | Rail, top | 1 | |
| 30 | - | FV255288 | | NP | PLATE, MOUNTING, PANEL | 16 | |
| 31 | - | FV255289 | | NP | Plate | 16 | |
| 32 | - | | Z2 | ZB11992 | Nut, steel, hex., B.A., No. 2 | 16 | |
| 33 | 20 | | LV9/BTR | FV7609 | Cleat | 4 | |
| 34 | - | FV11728 | | NP | Stiffener, cleat | 4 | |
| 35 | - | | G1 | GA10995 | Rivet, steel, boss hd., 1/4 in. x 5/8 in. | 8 | |
| 36 | 21 | FV255285 | | NP | BRACKET, LAMP | 1 | |
| 37 | - | FV255286 | | NP | Bracket | 1 | |
| 38 | - | FV255287 | | NP | Rib | 2 | |
| 39 | - | FV137040 | | NP | Plate, lamp bracket | 1 | |
| 40 | - | | G1 | GA10978 | Rivet, steel, boss hd., 3/16 in. x 9/16 in. | 4 | Lamp bracket |
| 41 | - | FV255319 | | NP | WHEELBOX | 2 | |
| 42 | - | FV255280 | | NP | Ring, lashing | 2 | |
| 43 | - | | LV9/BTR | FV255302 | Hook, holding down | 10 | |
| 44 | - | | G1 | 5310-99-941-0913 | Nut, precision, UNF-2B, A steel, hex., zinc coated, 1/4 in. | 10 | Holding down hooks |
| 45 | - | | G1 | 5310-99-941-0891 | Nut, precision, UNF-2B, A steel, hex., lock, zinc coated, 1/4 in. | 10 | |
| 46 | - | FV13423 | LV6/MT13 | 78173 | Washer (special) | 10 | Centre support |
| 47 | - | FV255315 | | NP | Support, centre | 1 | |
| 48 | - | | G1 | 5305-99-941-0524 | Screw, precision, UNF-2A, R steel, hex. hd., zinc coated, 5/16 in. x 5/8 in. | 4 | |
| 49 | - | | G1 | 5310-99-941-0914 | Nut, precision, UNF-2B, A steel, hex., zinc coated, 5/16 in. | 4 | |
| 50 | - | | G1 | XB11624 | Washer, plain, steel, zinc coated, 5/16 in. | 4 | |
| 51 | - | | G1 | 5310-99-941-6655 | Washer, spring, steel, S.T., sq. section, 5/16 in. | 4 | |

TRAILER, 1/2 TON, 2 WHEELED

BODY AND FITTINGS

| Item No. | Plate and Ref.No. | Drawing No. | V. A. O. S. Section | Part No. | Designation | No. Off | Remarks |
|----------|-------------------|-------------|---------------------|------------------|---|---------|--------------------------------|
| 1 | - | | LV6/MT1 | 17301 | BODY - Contd. | | |
| 2 | - | | | | Plug, brass, B.S.P., 1/2 in.; with collar | 6 | |
| 3 | - | | M3 | MC8069 | Washer, copper and asbestos, 1.102 in. O.D., x .827 in. I.D., x 1/16 in. | 6 | |
| 4 | - | FV11770 | | NP | Buffer, stand | 2 | |
| 5 | - | | Z2 | ZB11025 | Screw, steel, hex. hd., B.A., No. 2 x 3/8 in. | 4 | } Buffer to rear panel |
| 6 | - | | G1 | 5310-99-941-6653 | Washer, spring, steel, S.T., sq. section, 3/16 in. | 4 | |
| 7 | - | FV255318 | | NP | Plate, registration number | 1 | |
| 8 | - | | Z2 | ZB11025 | Screw, steel, hex. hd., B.A., No. 2 x 3/8 in. | 6 | } Registration number plate |
| 9 | - | | G1 | 5310-99-941-6653 | Washer, spring, steel, S.T., sq. section, 3/16 in. | 6 | |
| 10 | - | FV255309 | | NP | Duckboard | 1 | |
| 11 | - | | LV9/BTR | FV255316 | Cover, tarpulin | 1 | |

TRAILER, 1/2 TON, 2 WHEELED

NUMERICAL INDEX TO PART NUMBERS

In the numerical sequence of Part No. column of this Index all letters, dashes, oblique strokes and suffixes are disregarded when arranging the sequence of numbers in the column.

Examples - SS/EAR1-1 read as 11
K/5-L-1 read as 51
SM/2025/FG read as 2025
K1-86-GB19 read as 18619

NUMERICAL INDEX TO PART NUMBERS

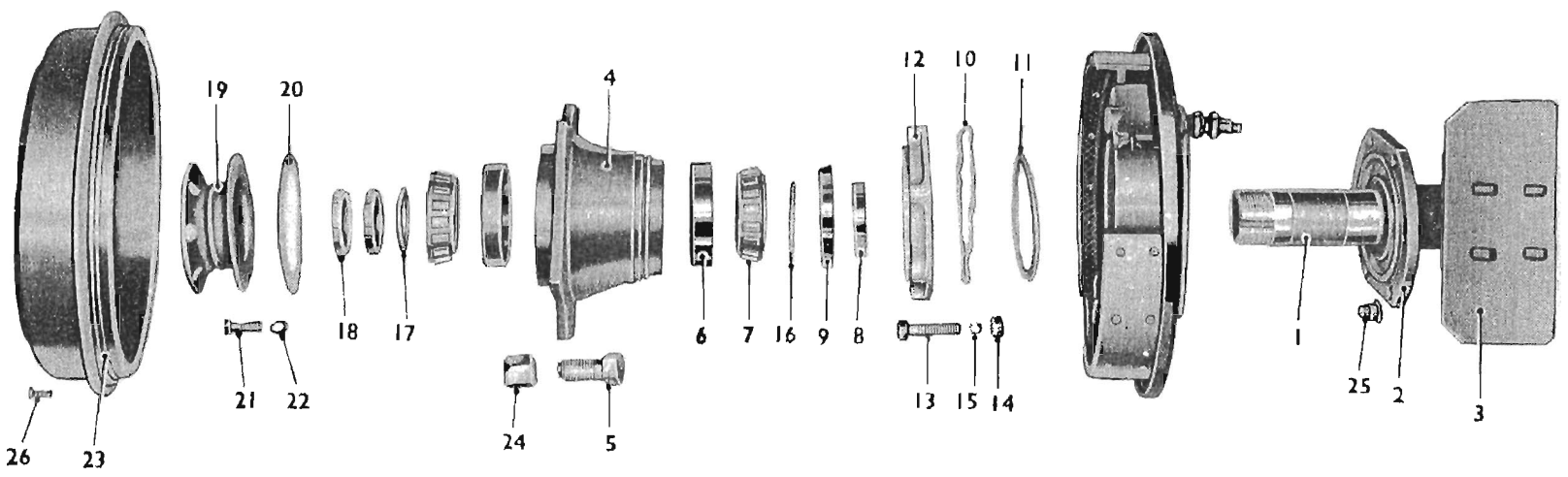
| V.A.O.S. Section | Part No. | Page No. | V.A.O.S. Section | Part No. | Page No. | V.A.O.S. Section | Part No. | Page No. |
|------------------|-----------|----------|------------------|-------------|----------|------------------|------------------|----------|
| LV7/GB | GB67 | 2 | LV9/BTR | FV12083 | 3 | LV9/BTR | FV183483 | 9 |
| LV6/MT7 | TN/354A | 1 | LV9/BTR | FV12086 | 4 | LV9/BTR | FV183484 | 9 |
| LV6/MT7 | TN/359S | 1 | LV9/BTR | FV12109 | 4 | LV9/BTR | FV183485 | 9 |
| LV7/GB | GB535 | 2 | LV9/BTR | FV12427 | 12 | LV9/BTR | FV183486 | 9 |
| LV7/GB | 71-BS-3C | 1 | LV9/BTR | FV12431 | 12 | LV9/BTR | FV183487 | 9 |
| LV7/GB | GB1404C | 2 | LV9/BTR | FV12435 | 12 | LV6/MT4 | WR/2132/10 | 15 |
| LV6/MT4 | WR/2131 | 14 | LV9/BTR | FV12782 | 8 | LV6/MT4 | WR/2132/12 | 15 |
| LV6/MT1 | SQ/E2145 | 10 | LV9/BTR | FV12784 | 9 | LV9/BTR | FV227106 | 17 |
| LV7/GB | GB2501 | 2 | LV9/BTR | FV12787 | 8 | LV9/BTR | FV239787 | 7 |
| LV7/GB | GB2841 | 2 | LV9/BTR | FV13462 | 14 | LV9/BTR | FV239852 | 3 |
| LV6/MT4 | WR/3168 | 14 | LV9/BTR | FV14350 | 1 | LV9/BTR | FV239854 | 9 |
| LV6/MT1 | TT/NB5960 | 1 | LV9/BTR | FV14355 | 1 | LV9/BTR | FV255260 | 14 |
| LV9/BTR | FV7608 | 18.19.20 | LV9/BTR | FV14356 | 1 | LV9/BTR | FV255302 | 20 |
| LV9/BTR | FV7609 | 18.19.20 | LV9/BTR | FV14361 | 1 | LV9/BTR | FV255316 | 21 |
| LV9/BTR | FV7611 | 6 | LV9/BTR | FV14365 | 1 | LV6/MT7 | TN/359S/354X | 1 |
| LV9/BTR | FV7617 | 5 | LV7/GB | GB14818 | 2 | LV6/MT3 | LU/445721 | 16 |
| LV9/BTR | FV7741 | 8 | LV9/BTR | FV15300 | 1 | LV6/MT3 | LU/552103 | 16 |
| LV9/BTR | FV7864 | 3.4 | LV9/BTR | FV15301 | 1 | LV6/MT3 | LU/573042 | 16 |
| LV9/BTR | FV7867 | 4.9 | LV9/BTR | FV15302 | 1 | LV6/MT3 | LU/573043 | 16 |
| LV9/BTR | FV7909 | 9 | LV9/BTR | FV15524 | 1 | LV6/MT3 | LU/573062 | 16 |
| LV9/BTR | FV7910 | 9 | LV6/MT4 | WR/2132/1 | 14 | LV6/MT3 | LU/573064 | 15 |
| LV9/BTR | FV7911 | 9 | LV6/MT4 | WR/2132/2 | 14 | LV6/MT3 | LU/573065 | 16 |
| LV9/BTR | FV7912 | 9 | LV6/MT4 | WR/2132/3 | 14 | LV6/MT3 | LU/573074 | 16 |
| LV9/BTR | FV7947 | 3 | LV6/MT4 | WR/2132/4 | 14 | LV6/MT3 | LU/573075 | 16 |
| LV9/BTR | FV7948 | 3 | LV6/MT4 | WR/2132/5 | 14 | LV6/MT4 | LU/860363 | 14 |
| LV9/BTR | FV7950 | 3 | LV6/MT4 | WR/2132/6 | 14 | LV6/MT4 | LU/860364 | 14 |
| LV9/BTR | FV7951 | 3 | LV6/MT4 | WR/2132/9 | 15 | LV6/MT4 | LU/860369 | 14 |
| LV9/BTR | FV7952 | 3 | LV6/MT1 | GO/B22090 | 1 | LV6/MT4 | LU/861122 | 13.14.15 |
| LV9/BTR | FV7953 | 3 | LV7/GB | GB39757 | 1 | LV6/MT14 | 2530-99-910-7648 | 2 |
| LV9/BTR | FV7954 | 3 | LV7/GB | GB40038 | 2 | LV6/MT14 | 2530-99-910-7652 | 2 |
| LV9/BTR | FV7963 | 3 | LV7/GB | GB41322C | 2 | G1 | 5305-99-941-0295 | 1.12 |
| LV9/BTR | FV8054 | 9 | LV7/GB | GB41323C | 2 | G1 | 5305-99-941-0296 | 11 |
| LV9/BTR | FV8363 | 8 | LV7/GB | GB/B41582BT | 1 | G1 | 5305-99-941-0304 | 4 |
| LV9/BTR | FV8589 | 8 | LV7/GB | GB/B41584BT | 1 | G1 | 5305-99-941-0310 | 5 |
| LV9/BTR | FV11503 | 5 | LV7/GB | GB/B41585BT | 1 | G1 | 5305-99-941-0314 | 1 |
| LV9/BTR | FV11504 | 5 | LV7/GB | GB42077 | 2 | G1 | 5305-99-941-0318 | 3 |
| LV9/BTR | FV11512 | 8 | LV7/GB | GB42702C | 2 | G1 | 5305-99-941-0327 | 8 |
| LV9/BTR | FV11513 | 8 | LV7/GB | GB42704C | 2 | G1 | 5305-99-941-0363 | 10 |
| LV9/BTR | FV11517 | 8 | LV7/GB | GB42705 | 2 | G1 | 5305-99-941-0438 | 2 |
| LV9/BTR | FV11534 | 8 | LV7/GB | GB42706 | 2 | G1 | 5305-99-941-0512 | 7 |
| LV9/BTR | FV11535 | 8 | LV7/GB | GB42878 | 2 | G1 | 5305-99-941-0524 | 9.19.20 |
| LV9/BTR | FV11536 | 8 | LV7/GB | GB43585 | 1 | G1 | 5305-99-941-0525 | 7 |
| LV9/BTR | FV11537 | 8 | LV6/MT3 | LU/53187A | 15 | G1 | 5305-99-941-0526 | 10 |
| LV9/BTR | FV11546 | 8 | LV6/MT3 | LU/53189B | 16 | G1 | 5305-99-941-0538 | 9 |
| LV9/BTR | FV11548 | 8 | LV9/BTR | FV108614 | 3 | G1 | 5305-99-941-0539 | 3.15 |
| LV9/BTR | FV11549 | 8 | LV9/BTR | FV108615 | 3 | G1 | 5305-99-941-0540 | 5.6 |
| LV9/BTR | FV11555 | 9 | LV9/BTR | FV108616 | 3 | G1 | 5305-99-941-0541 | 5 |
| LV9/BTR | FV11556 | 9 | LV9/BTR | FV108619 | 4 | G1 | 5305-99-941-1778 | 6 |
| LV9/BTR | FV11566 | 11 | LV9/BTR | FV108620 | 4 | G1 | 5305-99-941-6534 | 1 |
| LV9/BTR | FV11573 | 11 | LV9/BTR | FV109233 | 10 | G1 | 5305-99-941-6833 | 14 |
| LV9/BTR | FV11574 | 11 | LV9/BTR | FV109247 | 6 | G1 | 5305-99-941-8456 | 15 |
| LV9/BTR | FV11579 | 11 | LV9/BTR | FV109250 | 6 | G1 | 5310-99-941-0869 | 3 |
| LV9/BTR | FV11582 | 11.12 | LV9/BTR | FV109257 | 8 | G1 | 5310-99-941-0878 | 8 |
| LV9/BTR | FV11584 | 11.12 | LV9/BTR | FV131185 | 1 | G1 | 5310-99-941-0891 | 3.19.20 |
| LV9/BTR | FV11587 | 11 | LV9/BTR | FV136827 | 14 | G1 | 5310-99-941-0892 | 4.9 |
| LV9/BTR | FV11588 | 11 | LV9/BTR | FV136828 | 14 | G1 | 5310-99-941-0893 | 10 |
| LV9/BTR | FV11642 | 10 | LV9/BTR | FV137041 | 14 | G1 | 5310-99-941-0897 | 10 |
| LV9/BTR | FV11647 | 10 | LV9/BTR | FV137043 | 14 | G1 | 5310-99-941-0912 | 1.8 |
| LV9/BTR | FV11652 | 10 | LV9/BTR | FV137045 | 14 | G1 | 5310-99-941-0913 | 7.15.19 |
| LV9/BTR | FV11653 | 10 | LV9/BTR | FV137184 | 12 | G1 | 5310-99-941-0914 | 2.3.4 |
| LV9/BTR | FV11654 | 10 | LV9/BTR | FV137827 | 11 | G1 | 5310-99-941-0915 | 3.5.6 |
| LV9/BTR | FV11656 | 10 | LV9/BTR | FV183131 | 10 | G1 | 5310-99-941-0916 | 8 |
| LV9/BTR | FV11771 | 19 | LV9/BTR | FV183132 | 14 | G1 | 5310-99-941-3221 | 7 |
| LV9/BTR | FV12051 | 1 | LV9/BTR | FV183468 | 8 | G1 | 5310-99-941-3299 | 9 |
| LV9/BTR | FV12062 | 1 | LV9/BTR | FV183469 | 8 | G1 | 5310-99-941-6627 | 2 |
| LV9/BTR | FV12066 | 1 | LV9/BTR | FV183470 | 8 | G1 | 5310-99-941-6628 | 9 |
| LV9/BTR | FV12069 | 1 | LV9/BTR | FV183479 | 8 | G1 | 5310-99-941-6642 | 16.17 |

NUMERICAL INDEX TO PART NUMBERS

| V.A.O.S. Section | Part No. | Page No. | V.A.O.S. Section | Part No. | Page No. | V.A.O.S. Section | Part No. | Page No. |
|------------------|------------------|----------|------------------|----------|----------|------------------|----------|----------|
| G1 | 5310-99-941-6643 | 14 | | | | | | |
| G1 | 5310-99-941-6644 | 15.17 | | | | | | |
| G1 | 5310-99-941-6646 | 15 | | | | | | |
| G1 | 5310-99-941-6653 | 19.21 | | | | | | |
| G1 | 5310-99-941-6654 | 7 | | | | | | |
| G1 | 5310-99-941-6655 | 1.4.7 | | | | | | |
| G1 | 5310-99-941-6656 | 1.2.3 | | | | | | |
| G1 | 5310-99-941-6657 | 8 | | | | | | |
| G1 | 5310-99-941-7070 | 14 | | | | | | |
| G1 | 5310-99-941-7072 | 14.15 | | | | | | |
| G1 | 5310-99-941-7628 | 7 | | | | | | |
| G1 | 5315-99-942-0378 | 3.4.9 | | | | | | |
| G1 | 5315-99-942-0379 | 3 | | | | | | |
| G1 | 5315-99-942-0385 | 2 | | | | | | |
| G1 | 5315-99-942-0400 | 8 | | | | | | |
| G1 | 5315-99-942-3742 | 11 | | | | | | |
| G1 | 5315-99-942-3743 | 12 | | | | | | |
| G1 | 5315-99-942-3747 | 12 | | | | | | |
| G1 | 5315-99-942-3749 | 12 | | | | | | |
| G1 | 5315-99-942-3765 | 11 | | | | | | |
| G1 | 5315-99-942-3775 | 12 | | | | | | |
| LV6/MT3 | 6240-99-995-2236 | 16.17 | | | | | | |
| LV6/MT3 | 6240-99-995-2242 | 16.17 | | | | | | |
| LV6/MT3 | 6240-99-995-2245 | 16.17 | | | | | | |
| LV6/MT1 | 9905-99-942-6893 | 17 | | | | | | |
| LV6/MT1 | 9905-99-942-6894 | 6.18.20 | | | | | | |

AXLE AND HUBS

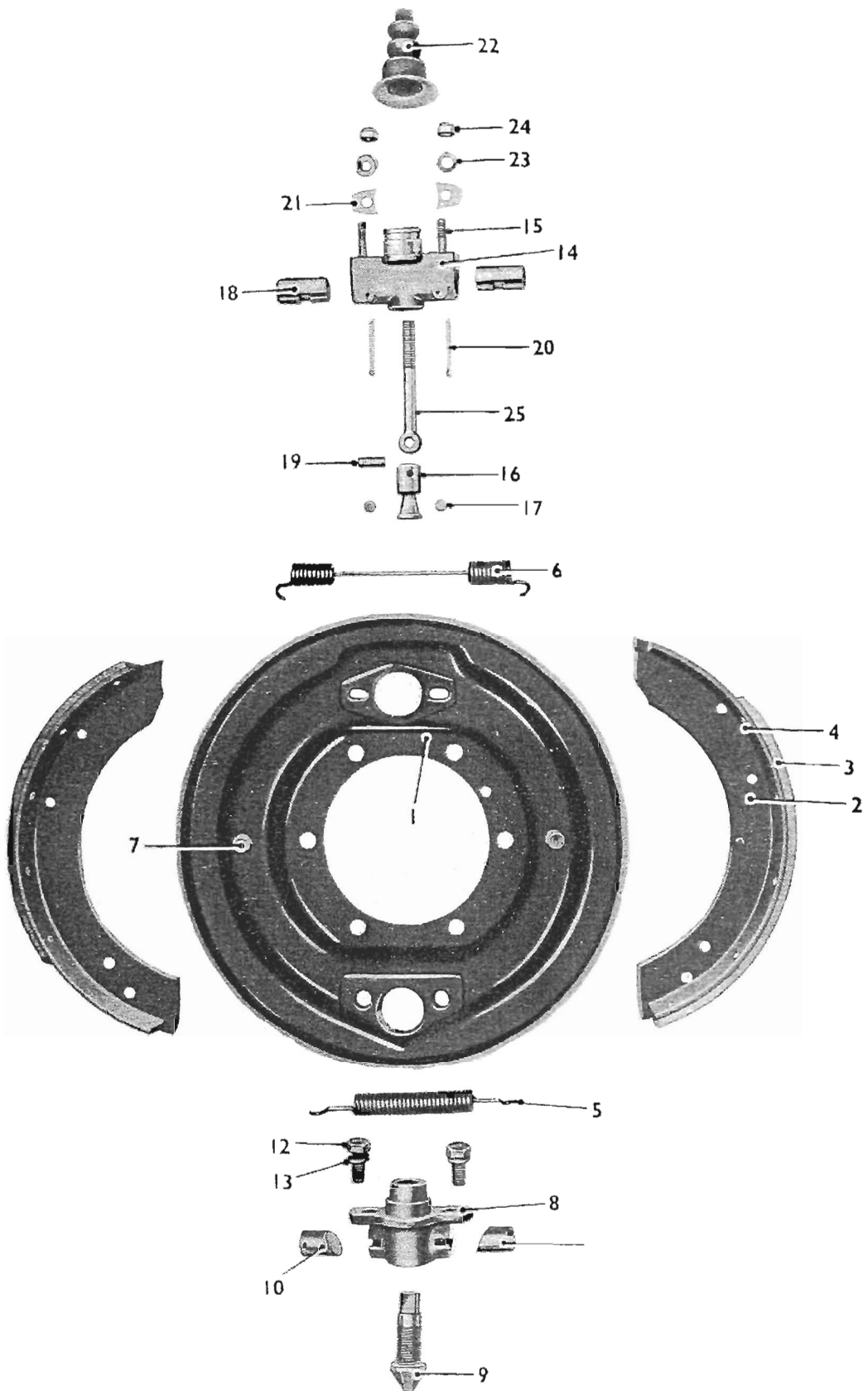
A



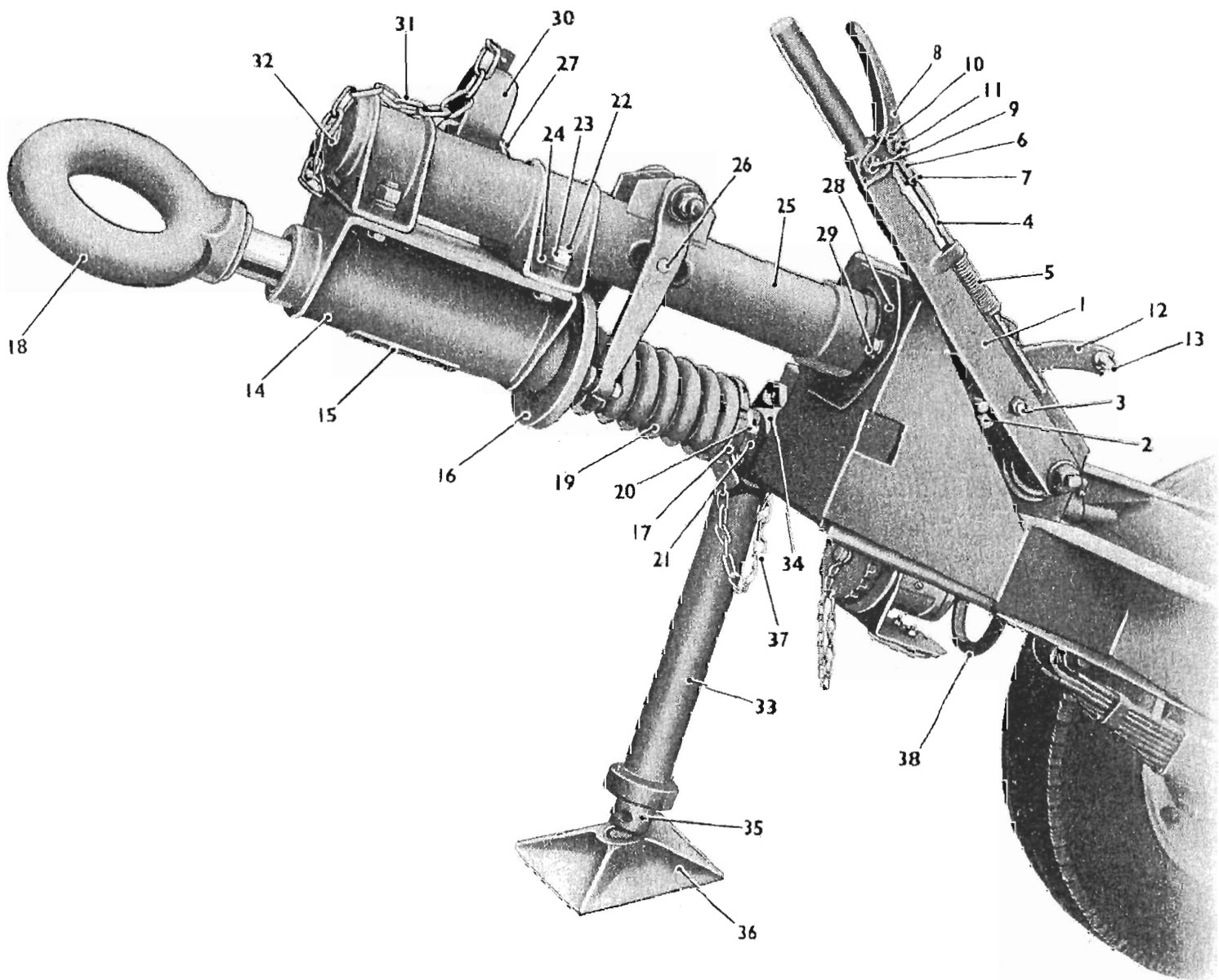
TP 4445

BRAKE, GIRLING, 10 in. X 1³/₄ in.

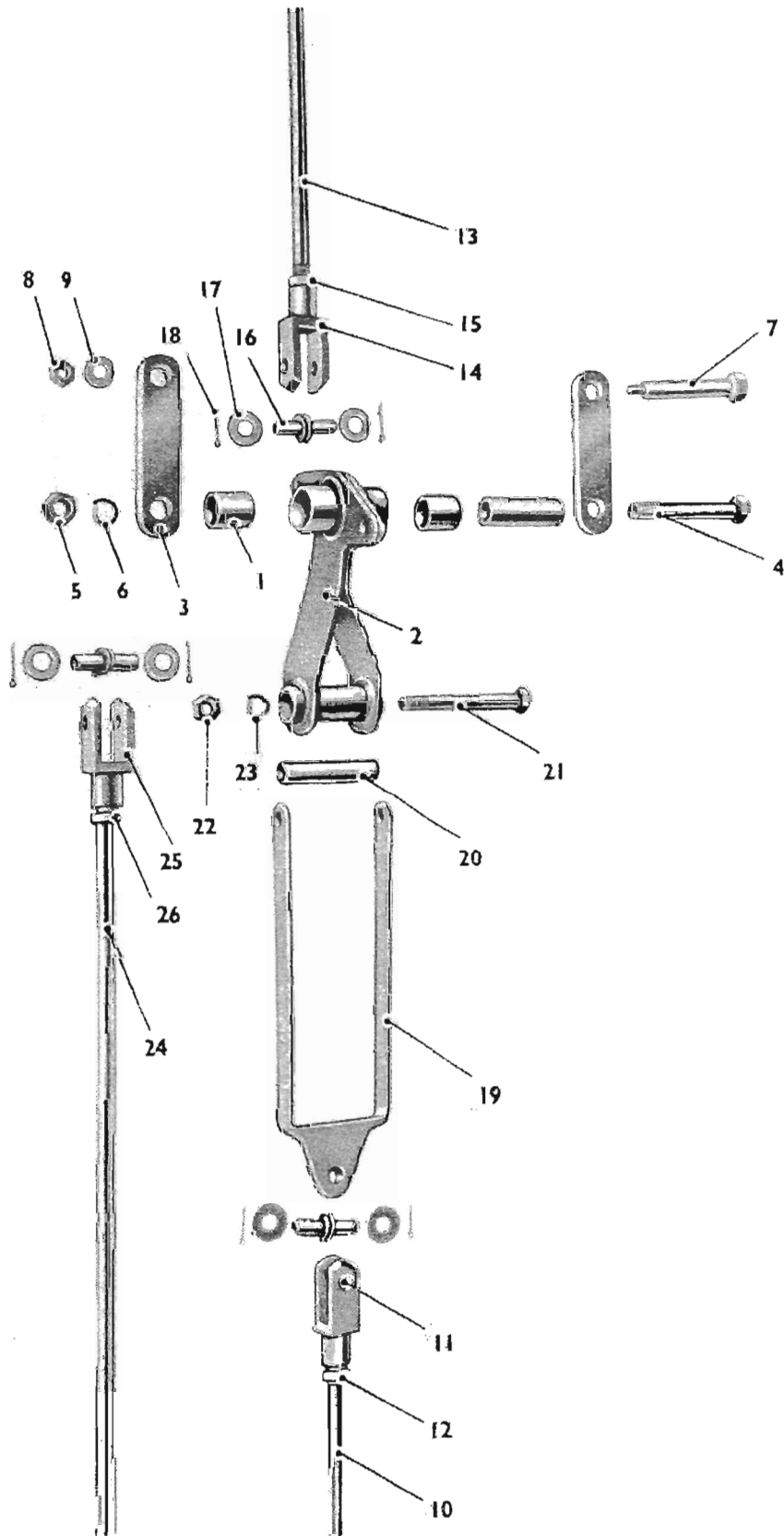
B



DRAUGHT-EYE, HANDBRAKE AND JACK

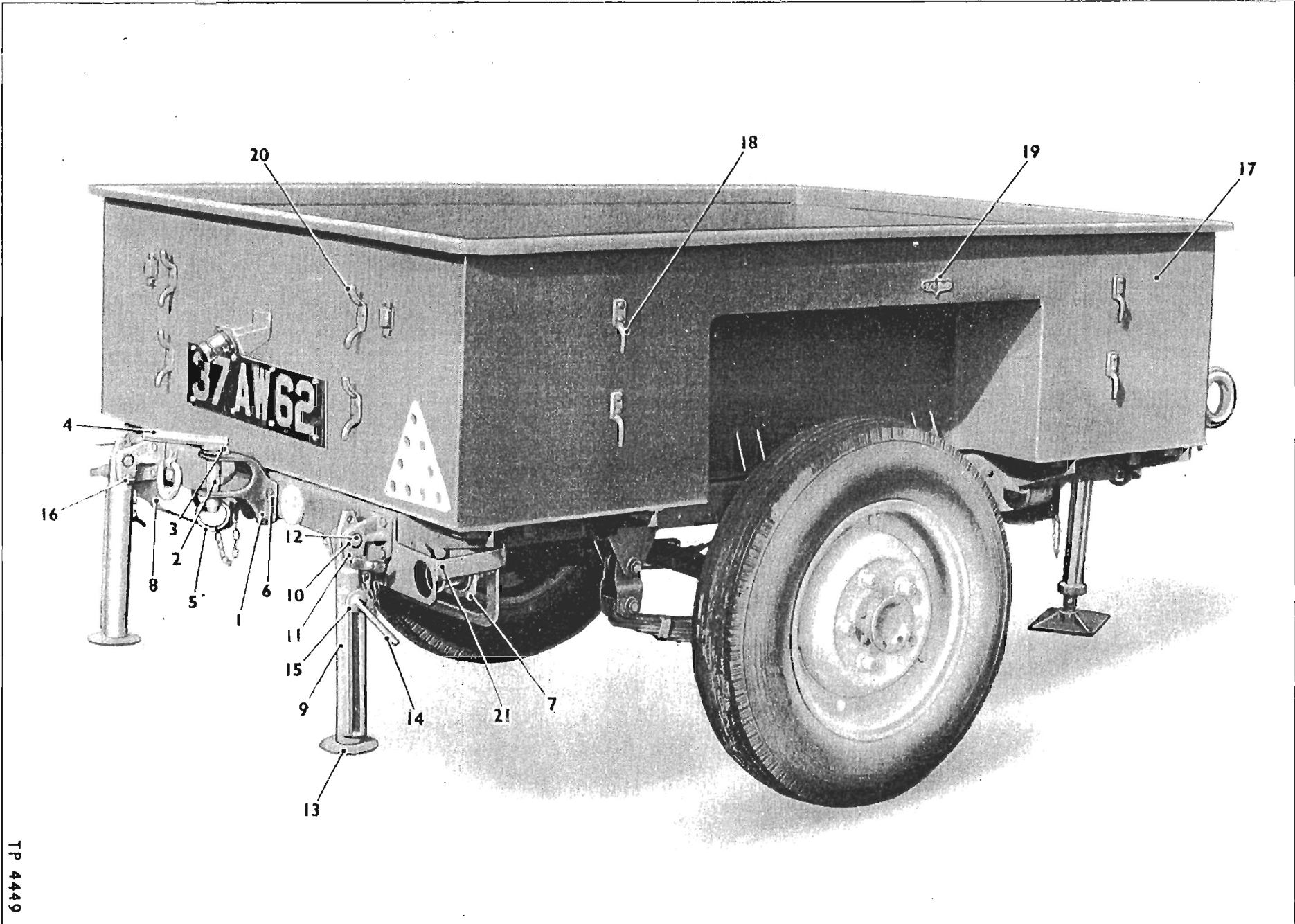


BRAKE LINKAGE



BODY AND FITTINGS

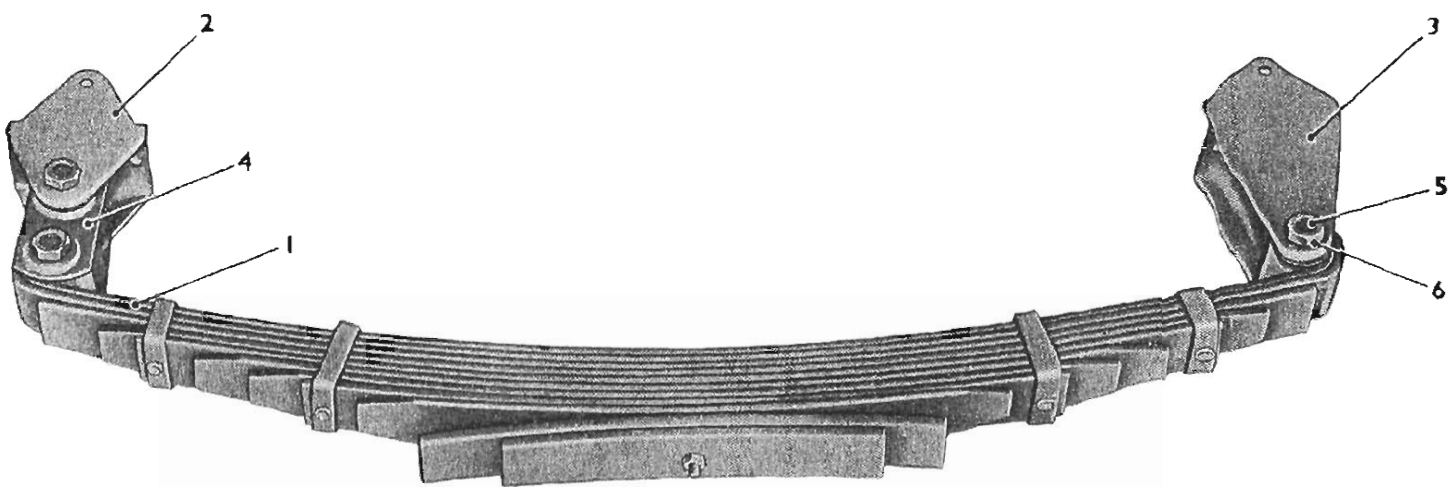
E



TP 4449

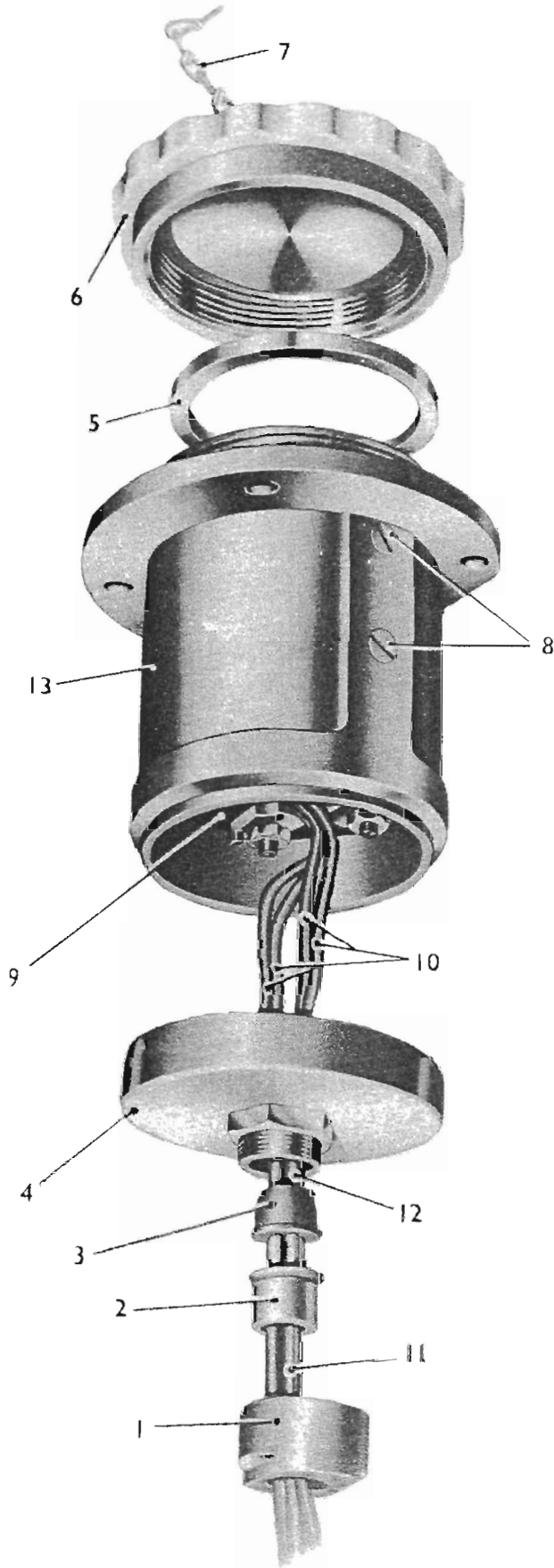
SUSPENSION

F



TP 4450

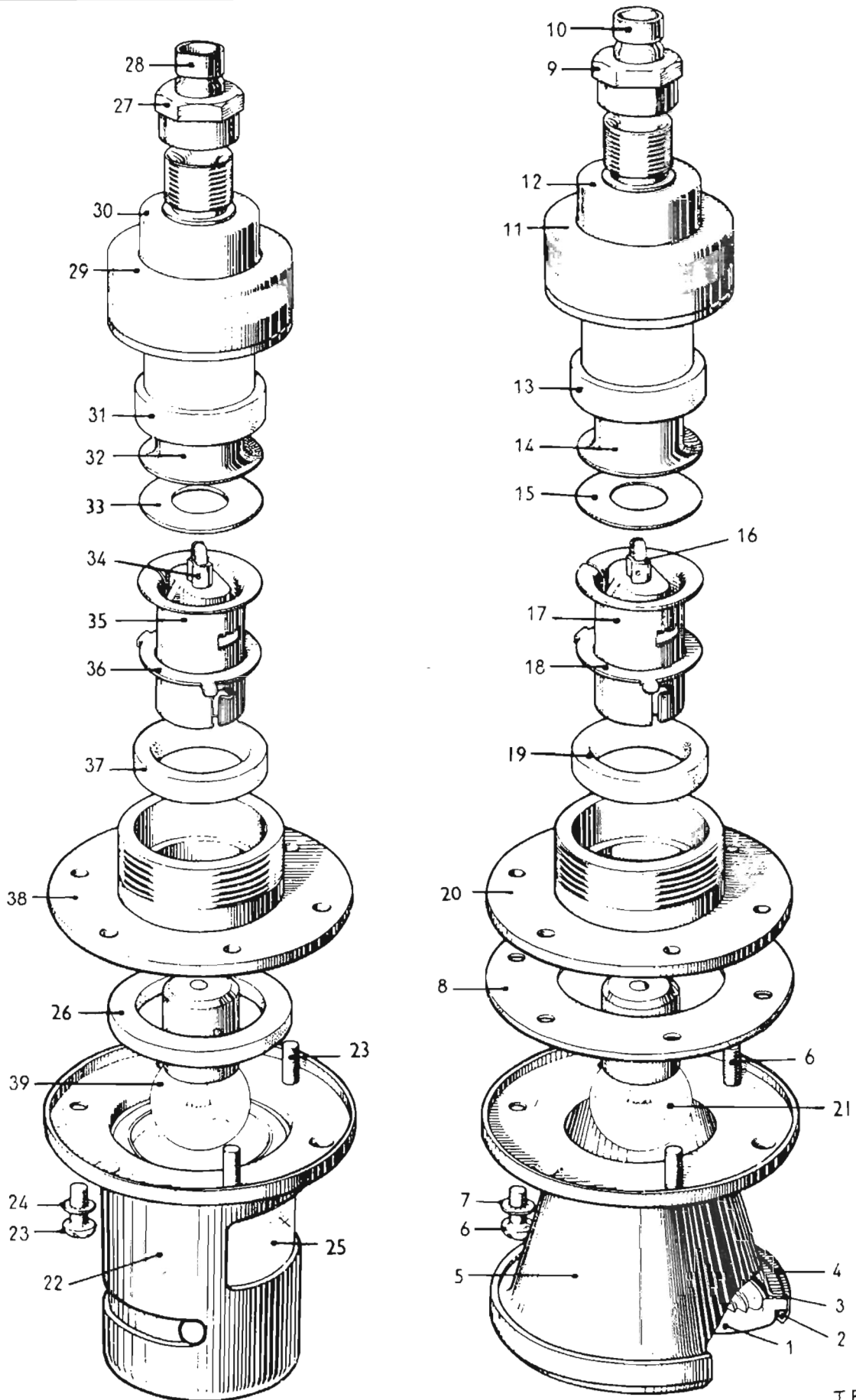
TRAILER SOCKET



LP 4321

TAIL AND NUMBER PLATE LAMP

H



T.B 4124A